

Claudin18.2
Rabbit Monoclonal antibody(Mab)
Catalog # AD80514

Specification

Claudin18.2 - Product info

Application	IHC-P
Primary Accession	P56857
Reactivity	Human
Host	Rabbit
Clonality	Monoclonal
Calculated MW	28122

Claudin18.2 - Additional info

Gene ID	56492
Other Names	
Claudin-18, Cldn18	

Dilution

IHC-P~~Ready-to-use

Storage

This product is stored at 2-8 °C, please use it within the expiration date.

Claudin18.2 - Protein Information

Name Cldn18

Function

Involved in alveolar fluid homeostasis via regulation of alveolar epithelial tight junction composition and therefore ion transport and solute permeability, potentially via downstream regulation of the actin cytoskeleton organization and beta-2-adrenergic signaling (PubMed:[24588076](#)). Required for lung alveolarization and maintenance of the paracellular alveolar epithelial barrier (PubMed:[24787463](#)). Acts to maintain epithelial progenitor cell proliferation and organ size, via regulation of YAP1 localization away from the nucleus and thereby restriction of YAP1 target gene transcription (PubMed:[29400695](#)). Acts as a negative regulator of RANKL- induced osteoclast differentiation, potentially via relocation of TJP2/ZO-2 away from the nucleus, subsequently involved in bone

Cellular Location

resorption in response to calcium deficiency (PubMed:[22437732](#)). Mediates the osteoprotective effects of estrogen, potentially via acting downstream of estrogen signaling independently of RANKL signaling pathways (PubMed:[23299504](#)). Cell junction, tight junction. Cell membrane; Multi-pass membrane protein.

Tissue Location

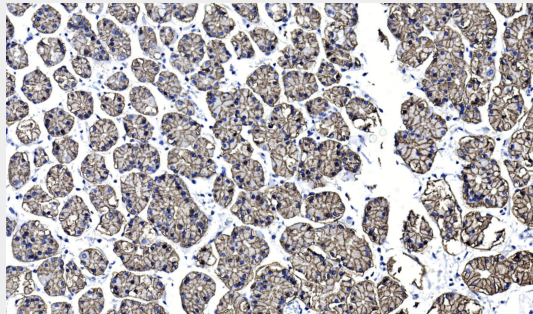
Note=Localizes to tight junctions in epithelial cells. [Isoform A2.1]: Cell junction, tight junction. Lateral cell membrane
Expressed in the lung (at protein level). [Isoform A1.2]: Expressed in lung. [Isoform A2.2]: Expressed in stomach.

Claudin18.2 - Protocols

Provided below are standard protocols that you may find useful for product applications.

- [Western Blot](#)
- [Blocking Peptides](#)
- [Dot Blot](#)
- [Immunohistochemistry](#)
- [Immunofluorescence](#)
- [Immunoprecipitation](#)
- [Flow Cytometry](#)
- [Cell Culture](#)

Claudin18.2 - Images



Gastric tissues