

Caveolin-1
Rabbit Monoclonal antibody(Mab)
Catalog # AD80512**Specification**

Caveolin-1 - Product info

Application	IHC-P
Primary Accession	Q03135
Reactivity	Human
Host	Rabbit
Clonality	Monoclonal
Calculated MW	20472

Caveolin-1 - Additional info

Gene ID	857
Other Names	
Caveolin-1, CAV1, CAV	

Dilution

IHC-P~~Ready-to-use

Storage**This product is stored at 2-8 °C, please use it within the expiration date.****Caveolin-1 - Protein Information****Name CAV1**Synonyms
Function**CAV**

May act as a scaffolding protein within caveolar membranes (PubMed:[11751885](#)). Forms a stable heterooligomeric complex with CAV2 that targets to lipid rafts and drives caveolae formation. Mediates the recruitment of CAVIN proteins (CAVIN1/2/3/4) to the caveolae (PubMed:[19262564](#)). Interacts directly with G-protein alpha subunits and can functionally regulate their activity (By similarity). Involved in the costimulatory signal essential for T-cell receptor (TCR)-mediated T-cell activation. Its binding to DPP4 induces T-cell proliferation and NF-kappa-B activation in a T-cell receptor/CD3-dependent manner (PubMed:[17287217](#)). Recruits CTNNB1 to caveolar membranes and may regulate CTNNB1-mediated signaling through the

Cellular Location

Wnt pathway (By similarity). Negatively regulates TGF β 1-mediated activation of SMAD2/3 by mediating the internalization of TGF β R1 from membrane rafts leading to its subsequent degradation (PubMed:[25893292](#)). Binds 20(S)-hydroxycholesterol (20(S)-OHC) (By similarity).

Golgi apparatus membrane; Peripheral membrane protein. Cell membrane; Peripheral membrane protein. Membrane, caveola; Peripheral membrane protein. Membrane raft. Golgi apparatus, trans-Golgi network {ECO:0000250|UniProtKB:P33724} Note=Colocalized with DPP4 in membrane rafts. Potential hairpin-like structure in the membrane. Membrane protein of caveolae Skeletal muscle, liver, stomach, lung, kidney and heart (at protein level). Expressed in the brain

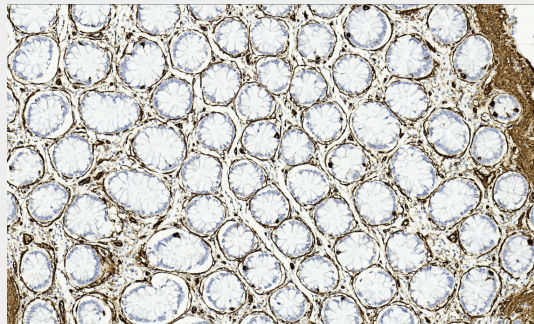
Tissue Location

Caveolin-1 - Protocols

Provided below are standard protocols that you may find useful for product applications.

- [Western Blot](#)
- [Blocking Peptides](#)
- [Dot Blot](#)
- [Immunohistochemistry](#)
- [Immunofluorescence](#)
- [Immunoprecipitation](#)
- [Flow Cytometry](#)
- [Cell Culture](#)

Caveolin-1 - Images



Colon