

**MAP2**  
Mouse Monoclonal antibody(Mab)  
Catalog # AD80502

## Specification

---

### MAP2 - Product info

Application	IHC-P
Primary Accession	<a href="#">P11137</a>
Reactivity	Human
Host	Mouse
Clonality	Monoclonal
Calculated MW	199526

### MAP2 - Additional info

#### Other Names

Microtubule-associated protein 2, MAP-2, MAP2

#### Dilution

IHC-P~~Ready-to-use

#### Storage

**This product is stored at 2-328 °C, please use it within the expiration date.**

### MAP2 - Protein Information

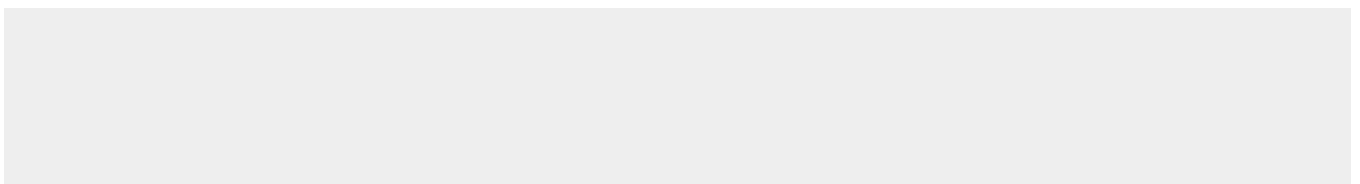
Name MAP2

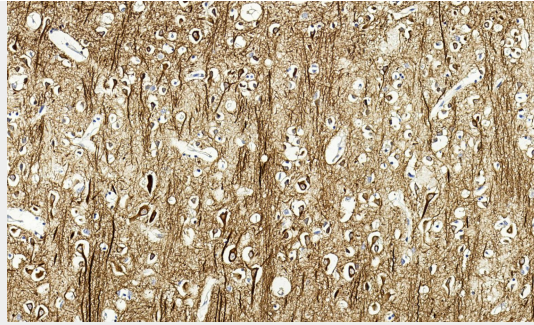
### MAP2 - Protocols

Provided below are standard protocols that you may find useful for product applications.

- [Western Blot](#)
- [Blocking Peptides](#)
- [Dot Blot](#)
- [Immunohistochemistry](#)
- [Immunofluorescence](#)
- [Immunoprecipitation](#)
- [Flow Cytometry](#)
- [Cell Culture](#)

### MAP2 - Images





Brain tissue