

p21
Rabbit Monoclonal antibody(Mab)
Catalog # AD80498

Specification

p21 - Product info

Application	IHC-P, IHC
Primary Accession	P38936
Reactivity	Human
Host	Rabbit
Clonality	Monoclonal
Calculated MW	18119

p21 - Additional info

Gene ID	1026
Gene Name	CDKN1A

Other Names

Cyclin-dependent kinase inhibitor 1, CDK-interacting protein 1, Melanoma differentiation-associated protein 6, MDA-6, p21, CDKN1A ([HGNC:1784](http://www.genenames.org/cgi-bin/gene_symbol_report?hgnc_id=1784))

Dilution

IHC-P~~Ready-to-use
IHC~~Ready-to-use

Storage

Precautions

This product is stored at 2-8 °C, please use it within the expiration date.

p21/WAF1 Antibody is for research use only and not for use in diagnostic or therapeutic procedures.

p21 - Protein Information

Name CDKN1A ([HGNC:1784](#))

Synonyms

CAP20, CDKN1, CIP1, MDA6, PIC1, SDI1, WA

Function

May be involved in p53/TP53 mediated inhibition of cellular proliferation in response to DNA damage. Binds to and inhibits cyclin-dependent kinase activity, preventing phosphorylation of critical cyclin-dependent kinase substrates and blocking cell cycle progression. Functions in the nuclear localization and assembly of cyclin D-CDK4 complex and promotes its kinase activity towards RB1. At higher

Cellular Location
Tissue Location

stoichiometric ratios, inhibits the kinase activity of the cyclin D-CDK4 complex. Inhibits DNA synthesis by DNA polymerase delta by competing with POLD3 for PCNA binding (PubMed:[11595739](#)).

Cytoplasm. Nucleus.

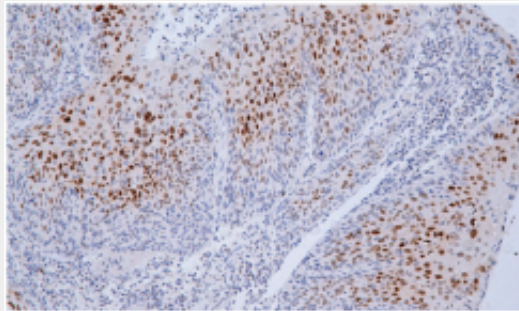
Expressed in all adult tissues, with 5-fold lower levels observed in the brain

p21 - Protocols

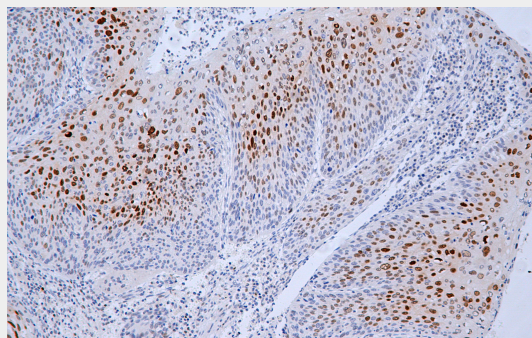
Provided below are standard protocols that you may find useful for product applications.

- [Western Blot](#)
- [Blocking Peptides](#)
- [Dot Blot](#)
- [Immunohistochemistry](#)
- [Immunofluorescence](#)
- [Immunoprecipitation](#)
- [Flow Cytometry](#)
- [Cell Culture](#)

p21 - Images



Cervical cancer



Immunohistochemical analysis of paraffin-embedded human cervical carcinoma tissue using AD80417 performed on the Abcarta® FAIP-30 Fully automated IHC platform. Tissue was fixed with formaldehyde at room temperature, antigen retrieval was by heat mediation with a Citrate buffer (pH6.0). Samples were incubated with primary antibody (Ready-to-use) for 15 min at room temperature. AmpSee™ Detection Systems [Abcepta:ADR005] was used as the secondary antibody.