

**PDGFR $\alpha$**   
**Rabbit Monoclonal antibody(Mab)**  
**Catalog # AD80497**

## Specification

---

### PDGFR $\alpha$ - Product info

Application	<b>IHC-P</b>
Primary Accession	<a href="#">P16234</a>
Reactivity	<b>Human</b>
Host	<b>Rabbit</b>
Clonality	<b>Monoclonal</b>
Calculated MW	<b>122670</b>

### PDGFR $\alpha$ - Additional info

#### Other Names

Platelet-derived growth factor receptor alpha, PDGF-R-alpha, PDGFR-alpha, 2.7.10.1, Alpha platelet-derived growth factor receptor, Alpha-type platelet-derived growth factor receptor, CD140 antigen-like family member A, CD140a antigen, Platelet-derived growth factor alpha receptor, Platelet-derived growth factor receptor 2, PDGFR-2, CD140a, PDGFRA, PDGFR2, RHEPDGFRA

#### Dilution

IHC-P~~Ready-to-use

#### Storage

**This product is stored at 2-256 °C, please use it within the expiration date.**

### PDGFR $\alpha$ - Protein Information

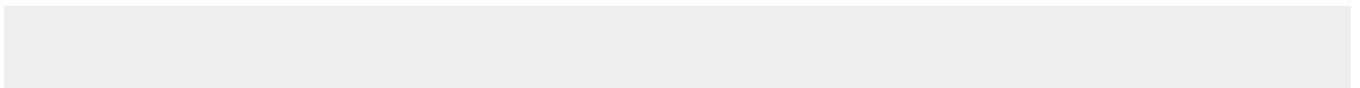
Name PDGFRA

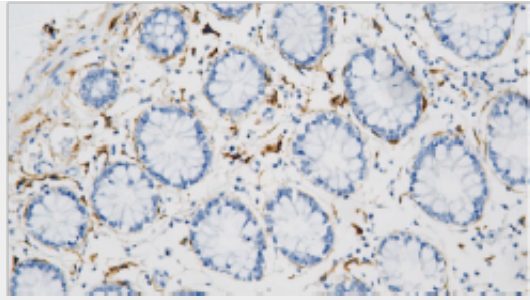
### PDGFR $\alpha$ - Protocols

Provided below are standard protocols that you may find useful for product applications.

- [Western Blot](#)
- [Blocking Peptides](#)
- [Dot Blot](#)
- [Immunohistochemistry](#)
- [Immunofluorescence](#)
- [Immunoprecipitation](#)
- [Flow Cytometry](#)
- [Cell Culture](#)

### PDGFR $\alpha$ - Images





Colorectal