

**CD10**  
**Rabbit Monoclonal antibody(Mab)**  
**Catalog # AD80489**

## Specification

---

### CD10 - Product info

Application	<b>IHC-P</b>
Primary Accession	<a href="#">P08473</a>
Reactivity	<b>Human</b>
Host	<b>Rabbit</b>
Clonality	<b>Monoclonal</b>
Calculated MW	<b>85514</b>

### CD10 - Additional info

#### Other Names

Nepriylsin, 3.4.24.11, Atriopeptidase, Common acute lymphocytic leukemia antigen, CALLA, Enkephalinase, Neutral endopeptidase 24.11, NEP, Neutral endopeptidase, Skin fibroblast elastase, SFE, CD10, MME {ECO:0000303|PubMed:27588448, ECO:0000312|HGNC:HGNC:7154}

#### Dilution

IHC-P~~Ready-to-use

#### Storage

**This product is stored at 2-48 °C, please use it within the expiration date.**

### CD10 - Protein Information

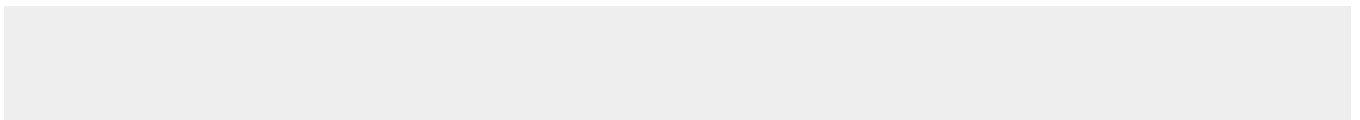
**Name** MME {ECO:0000303|PubMed:27588448, ECO:0000312|HGNC:HGNC:7154}

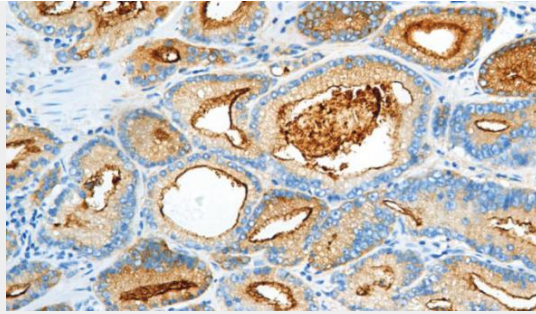
### CD10 - Protocols

Provided below are standard protocols that you may find useful for product applications.

- [Western Blot](#)
- [Blocking Peptides](#)
- [Dot Blot](#)
- [Immunohistochemistry](#)
- [Immunofluorescence](#)
- [Immunoprecipitation](#)
- [Flow Cytometry](#)
- [Cell Culture](#)

### CD10 - Images





Prostate cancer