

CD10
Rabbit Monoclonal antibody(Mab)
Catalog # AD80489

Specification

CD10 - Product info

Application	IHC-P
Primary Accession	P08473
Reactivity	Human
Host	Rabbit
Clonality	Monoclonal
Calculated MW	85514

CD10 - Additional info

Other Names

Nepilysin, 3.4.24.11, Atriopeptidase, Common acute lymphocytic leukemia antigen, CALLA, Enkephalinase, Neutral endopeptidase 24.11, NEP, Neutral endopeptidase, Skin fibroblast elastase, SFE, CD10, MME {ECO:0000303|PubMed:27588448, ECO:0000312|HGNC:HGNC:7154}

Dilution

IHC-P~~Ready-to-use

Storage

Maintain refrigerated at 2-8°C

CD10 - Protein Information

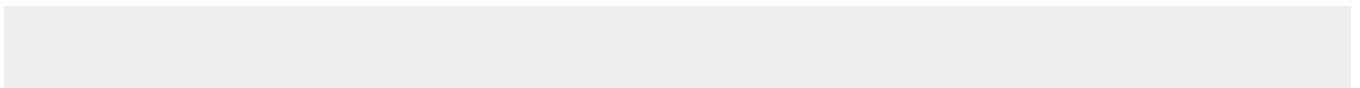
Name MME {ECO:0000303|PubMed:27588448, ECO:0000312|HGNC:HGNC:7154}

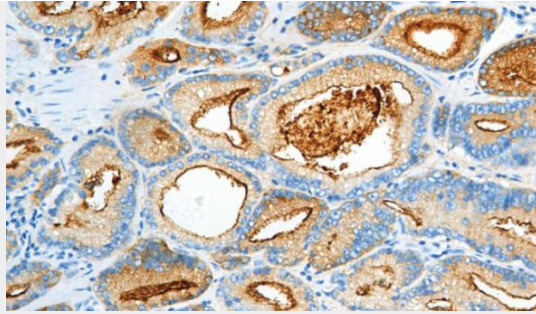
CD10 - Protocols

Provided below are standard protocols that you may find useful for product applications.

- [Western Blot](#)
- [Blocking Peptides](#)
- [Dot Blot](#)
- [Immunohistochemistry](#)
- [Immunofluorescence](#)
- [Immunoprecipitation](#)
- [Flow Cytometry](#)
- [Cell Culture](#)

CD10 - Images





Prostate cancer