

SDHB
Rabbit Monoclonal antibody(Mab)
Catalog # AD80461

Specification

SDHB - Product info

Application	IHC-P
Primary Accession	P21912
Reactivity	Human
Host	Rabbit
Clonality	Monoclonal
Calculated MW	31630

SDHB - Additional info

Other Names

Succinate dehydrogenase [ubiquinone] iron-sulfur subunit, mitochondrial, 1.3.5.1, Iron-sulfur subunit of complex II, Ip, SDHB, SDH, SDH1

Dilution

IHC-P~~Ready-to-use

Storage

Maintain refrigerated at 2-8°C

SDHB - Protein Information

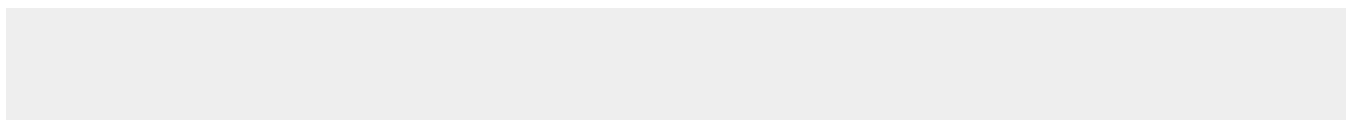
Name SDHB

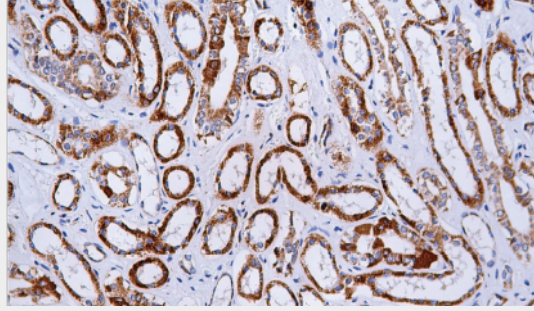
SDHB - Protocols

Provided below are standard protocols that you may find useful for product applications.

- [Western Blot](#)
- [Blocking Peptides](#)
- [Dot Blot](#)
- [Immunohistochemistry](#)
- [Immunofluorescence](#)
- [Immunoprecipitation](#)
- [Flow Cytometry](#)
- [Cell Culture](#)

SDHB - Images





Kidney