

CD25
Rabbit Monoclonal antibody(Mab)
Catalog # AD80456

Specification

CD25 - Product info

Application	IHC-P
Primary Accession	P01589
Reactivity	Human
Host	Rabbit
Clonality	Monoclonal
Calculated MW	30819

CD25 - Additional info

Other Names

Interleukin-2 receptor subunit alpha, IL-2 receptor subunit alpha, IL-2-RA, IL-2R subunit alpha, IL2-RA, TAC antigen, p55, CD25, IL2RA

Dilution

IHC-P~~Ready-to-use

Storage

This product is stored at 2-66 °C, please use it within the expiration date.

CD25 - Protein Information

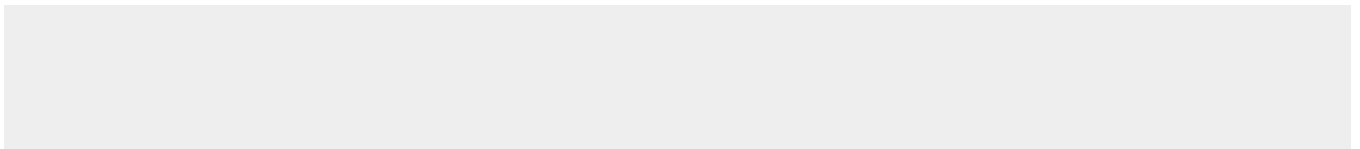
Name IL2RA

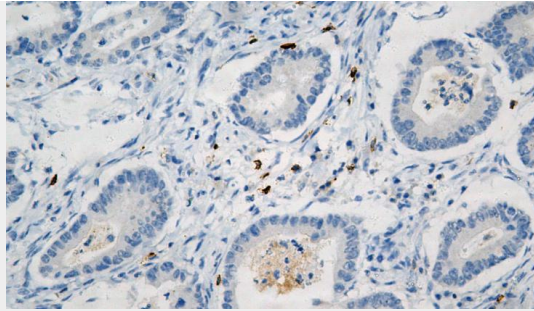
CD25 - Protocols

Provided below are standard protocols that you may find useful for product applications.

- [Western Blot](#)
- [Blocking Peptides](#)
- [Dot Blot](#)
- [Immunohistochemistry](#)
- [Immunofluorescence](#)
- [Immunoprecipitation](#)
- [Flow Cytometry](#)
- [Cell Culture](#)

CD25 - Images





Gastric adenocarcinoma.