

**CD25**  
**Rabbit Monoclonal antibody(Mab)**  
**Catalog # AD80456**

## Specification

---

### CD25 - Product info

Application	<b>IHC-P</b>
Primary Accession	<a href="#">P01589</a>
Reactivity	<b>Human</b>
Host	<b>Rabbit</b>
Clonality	<b>Monoclonal</b>

### CD25 - Additional info

#### Other Names

Interleukin-2 receptor subunit alpha, IL-2 receptor subunit alpha, IL-2-RA, IL-2R subunit alpha, IL2-RA, TAC antigen, p55, CD25, IL2RA

#### Dilution

IHC-P~~Ready-to-use

#### Storage

Maintain refrigerated at 2-8°C

### CD25 - Protein Information

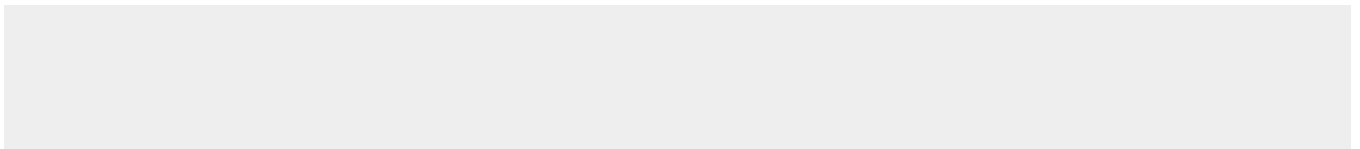
Name IL2RA

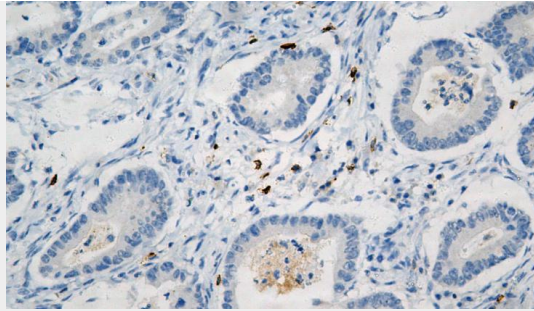
### CD25 - Protocols

Provided below are standard protocols that you may find useful for product applications.

- [Western Blot](#)
- [Blocking Peptides](#)
- [Dot Blot](#)
- [Immunohistochemistry](#)
- [Immunofluorescence](#)
- [Immunoprecipitation](#)
- [Flow Cytometry](#)
- [Cell Culture](#)

### CD25 - Images





Gastric adenocarcinoma.