

Smooth Muscle Myosin
Rabbit Monoclonal antibody(Mab)
Catalog # AD80443

Specification

Smooth Muscle Myosin - Product info

Application	IHC-P
Primary Accession	P35749
Reactivity	Human
Host	Rabbit
Clonality	Monoclonal

Smooth Muscle Myosin - Additional info

Other Names

Myosin-11, Myosin heavy chain 11, Myosin heavy chain, smooth muscle isoform, SMMHC, MYH11, KIAA0866

Dilution

IHC-P~~Ready-to-use

Storage

Maintain refrigerated at 2-8°C

Smooth Muscle Myosin - Protein Information

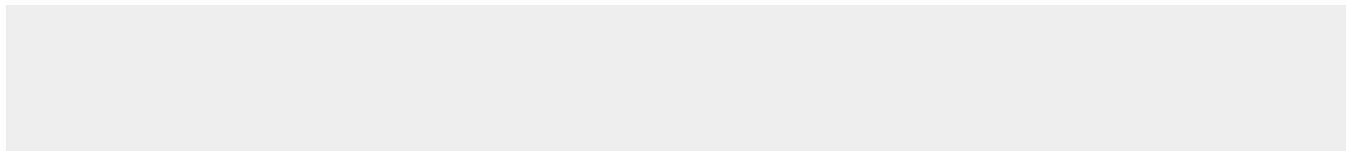
Name MYH11

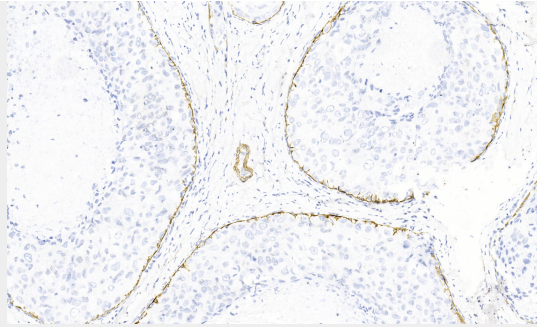
Smooth Muscle Myosin - Protocols

Provided below are standard protocols that you may find useful for product applications.

- [Western Blot](#)
- [Blocking Peptides](#)
- [Dot Blot](#)
- [Immunohistochemistry](#)
- [Immunofluorescence](#)
- [Immunoprecipitation](#)
- [Flow Cytometry](#)
- [Cell Culture](#)

Smooth Muscle Myosin - Images





Breast cancer