

**PHOX2B**  
**Rabbit Monoclonal antibody(Mab)**  
**Catalog # AD80441**

## Specification

---

### PHOX2B - Product info

Application	<b>IHC-P</b>
Primary Accession	<a href="#">O99453</a>
Reactivity	<b>Human</b>
Host	<b>Rabbit</b>
Clonality	<b>Monoclonal</b>
Calculated MW	<b>31621</b>

### PHOX2B - Additional info

#### Other Names

Paired mesoderm homeobox protein 2B, Neuroblastoma Phox, NBPhox, PHOX2B homeodomain protein, Paired-like homeobox 2B, PHOX2B, PMX2B

#### Dilution

IHC-P~~Ready-to-use

#### Storage

Maintain refrigerated at 2-8°C

### PHOX2B - Protein Information

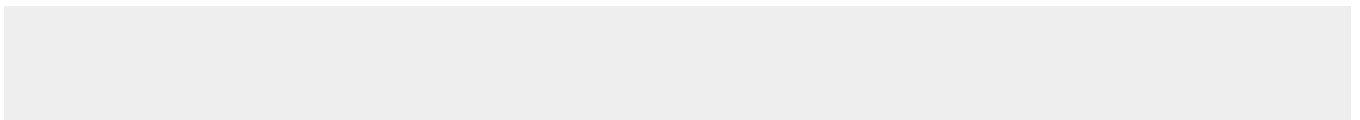
Name PHOX2B

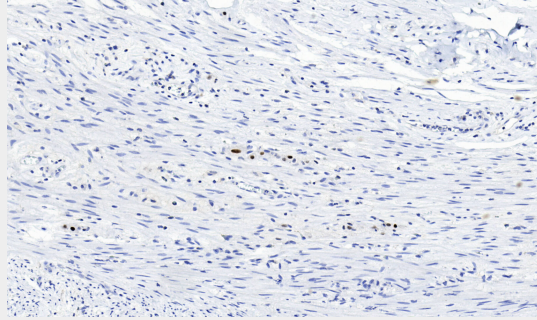
### PHOX2B - Protocols

Provided below are standard protocols that you may find useful for product applications.

- [Western Blot](#)
- [Blocking Peptides](#)
- [Dot Blot](#)
- [Immunohistochemistry](#)
- [Immunofluorescence](#)
- [Immunoprecipitation](#)
- [Flow Cytometry](#)
- [Cell Culture](#)

### PHOX2B - Images





Appendiceal ganglion