

BRAF
Rabbit Monoclonal antibody(Mab)
Catalog # AD80416**Specification**

BRAF - Product info

Application	IHC-P
Primary Accession	P15056
Reactivity	Human
Host	Rabbit
Clonality	Monoclonal
Calculated MW	84437

BRAF - Additional info

Gene ID	673
Gene Name	BRAF

Other Names

Serine/threonine-protein kinase B-raf, 2.7.11.1, Proto-oncogene B-Raf, p94, v-Raf murine sarcoma viral oncogene homolog B1, BRAF ([HGNC:1097](http://www.genenames.org/cgi-bin/gene_symbol_report?hgnc_id=1097)), BRAF1, RAFB1

Dilution

IHC-P~~Ready-to-use

Storage	This product is stored at 2-8 °C, please use it within the expiration date.
Precautions	BRAF Antibody is for research use only and not for use in diagnostic or therapeutic procedures.

BRAF - Protein Information

Name BRAF ([HGNC:1097](#))

Synonyms
Function

BRAF1, RAFB1

Protein kinase involved in the transduction of mitogenic signals from the cell membrane to the nucleus. May play a role in the postsynaptic responses of hippocampal neuron. Phosphorylates MAP2K1, and thereby contributes to the MAP kinase signal transduction pathway. Nucleus. Cytoplasm. Cell membrane. Note=Colocalizes with RGS14 and RAF1 in both the cytoplasm and membranes. Brain and testis.

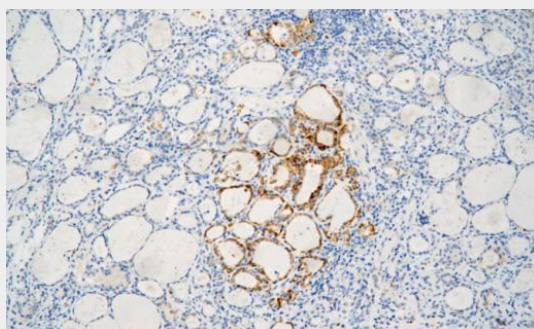
Cellular Location

Tissue Location

BRAF - Protocols

Provided below are standard protocols that you may find useful for product applications.

- [Western Blot](#)
- [Blocking Peptides](#)
- [Dot Blot](#)
- [Immunohistochemistry](#)
- [Immunofluorescence](#)
- [Immunoprecipitation](#)
- [Flow Cytometry](#)
- [Cell Culture](#)

BRAF - Images

Papillary thyroid carcinoma,