

AFP
Rabbit Monoclonal antibody(Mab)
Catalog # AD80415

Specification

AFP - Product info

Application	IHC-P, IHC
Primary Accession	P02771
Reactivity	Human
Host	Rabbit
Clonality	Monoclonal
Calculated MW	68678

AFP - Additional info

Gene ID	174
Gene Name	AFP
Other Names	
Alpha-fetoprotein, Alpha-1-fetoprotein, Alpha-fetoglobulin, AFP, HPAFP	

Dilution

IHC-P~~Ready-to-use
IHC~~Ready-to-use

Storage	This product is stored at 2-8 °C, please use it within the expiration date.
Precautions	Alpha-1-Fetoprotein Antibody is for research use only and not for use in diagnostic or therapeutic procedures.

AFP - Protein Information

Name AFP

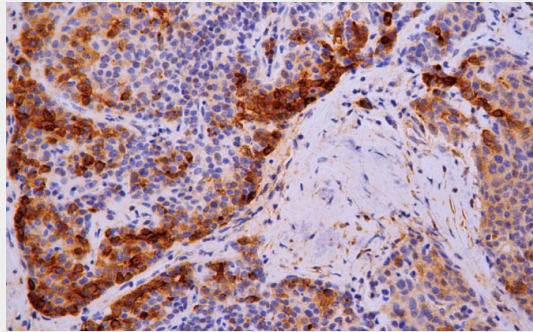
Synonyms	HPAFP
Function	Binds copper, nickel, and fatty acids as well as, and bilirubin less well than, serum albumin. Only a small percentage (less than 2%) of the human AFP shows estrogen-binding properties.
Cellular Location	Secreted.
Tissue Location	Plasma. Synthesized by the fetal liver and yolk sac

AFP - Protocols

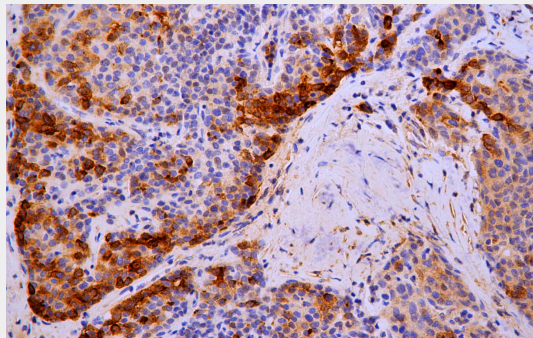
Provided below are standard protocols that you may find useful for product applications.

- [Western Blot](#)
- [Blocking Peptides](#)
- [Dot Blot](#)
- [Immunohistochemistry](#)
- [Immunofluorescence](#)
- [Immunoprecipitation](#)
- [Flow Cytometry](#)
- [Cell Culture](#)

AFP - Images



Liver cancer



Immunohistochemical analysis of paraffin-embedded human hepatocarcinoma tissue using AD80415 performed on the Abcarta® FAIP-30 Fully automated IHC platform. Tissue was fixed with formaldehyde at room temperature, antigen retrieval was by heat mediation with a EDTA buffer (pH9.0). Samples were incubated with primary antibody (Ready-to-use) for 15 min at room temperature. AmpSee™ Detection Systems [Abcepta:AR005] was used as the secondary antibody.