

**CD38**  
**Rabbit Monoclonal antibody(Mab)**  
**Catalog # AD80356****Specification**

---

**CD38 - Product info**

Application	IHC-P, IHC
Primary Accession	<a href="#">P28907</a>
Reactivity	Human
Host	Rabbit
Clonality	Monoclonal
Calculated MW	34328

**CD38 - Additional info**

Gene ID	952
Gene Name	CD38

**Other Names**

ADP-ribosyl cyclase/cyclic ADP-ribose hydrolase 1, 3.2.2.-, 3.2.2.6, 2'-phospho-ADP-ribosyl cyclase, 2'-phospho-ADP-ribosyl cyclase/2'-phospho-cyclic-ADP-ribose transferase, 2.4.99.20, 2'-phospho-cyclic-ADP-ribose transferase, ADP-ribosyl cyclase 1, ADPRC 1, Cyclic ADP-ribose hydrolase 1, cADPR hydrolase 1, T10, CD38, CD38

**Dilution**

IHC-P~~Ready-to-use  
IHC~~Ready-to-use

**Storage**

Maintain refrigerated at 2-8°C

**Precautions**

**CD38 Antibody is for research use only and not for use in diagnostic or therapeutic procedures.**

**CD38 - Protein Information****Name** CD38**Function**

**Synthesizes the second messengers cyclic ADP-ribose and nicotinate-adenine dinucleotide phosphate, the former a second messenger for glucose-induced insulin secretion. Also has cADPr hydrolase activity. Also moonlights as a receptor in cells of the immune system.**

**Cellular Location**

**Membrane; Single-pass type II membrane protein**

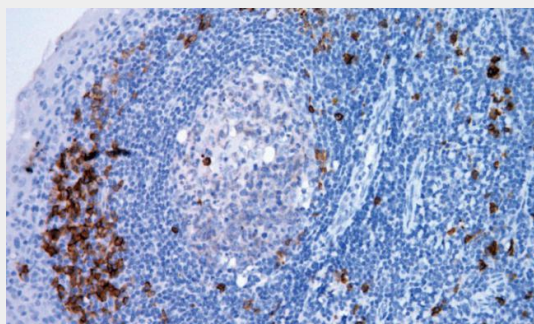
**Tissue Location**

**Expressed at high levels in pancreas, liver, kidney, brain, testis, ovary, placenta,**

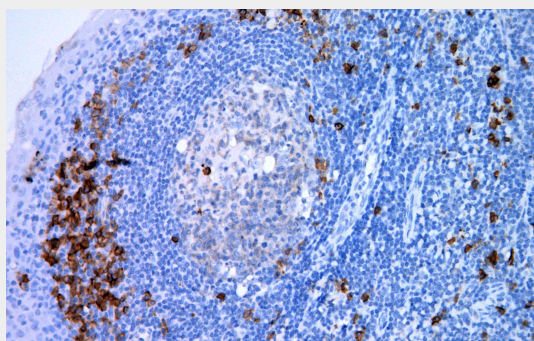
**malignant lymphoma and neuroblastoma.****CD38 - Protocols**

Provided below are standard protocols that you may find useful for product applications.

- [Western Blot](#)
- [Blocking Peptides](#)
- [Dot Blot](#)
- [Immunohistochemistry](#)
- [Immunofluorescence](#)
- [Immunoprecipitation](#)
- [Flow Cytometry](#)
- [Cell Culture](#)

**CD38 - Images**

Tonsil



Immunohistochemical analysis of paraffin-embedded human tonsil tissue using AD80356 performed on the Abcarta® FAIP-30 Fully automated IHC platform. Tissue was fixed with formaldehyde at room temperature, antigen retrieval was by heat mediation with a EDTA buffer (pH9.0). Samples were incubated with primary antibody (Ready-to-use) for 15 min at room temperature. AmpSee™ Detection Systems [Abcepta:AR005] was used as the secondary antibody.