

**CK18**  
**Rabbit Monoclonal antibody(Mab)**  
**Catalog # AD80354**

## Specification

---

### CK18 - Product info

Application	IHC-P, IHC
Primary Accession	<a href="#">P05783</a>
Reactivity	Human
Host	Rabbit
Clonality	Monoclonal
Calculated MW	48058

### CK18 - Additional info

Gene ID	3875
Gene Name	KRT18

#### Other Names

Keratin, type I cytoskeletal 18, Cell proliferation-inducing gene 46 protein, Cytokeratin-18, CK-18, Keratin-18, K18, KRT18, CYK18

#### Dilution

IHC-P~~Ready-to-use  
IHC~~Ready-to-use

Storage	This product is stored at 2-8 °C, please use it within the expiration date.
Precautions	CK18 Antibody is for research use only and not for use in diagnostic or therapeutic procedures.

### CK18 - Protein Information

**Name** KRT18

**Synonyms**  
**Function**

**CYK18**  
Involved in the uptake of thrombin-antithrombin complexes by hepatic cells (By similarity). When phosphorylated, plays a role in filament reorganization. Involved in the delivery of mutated CFTR to the plasma membrane. Together with KRT8, is involved in interleukin-6 (IL-6)-mediated barrier protection.  
Cytoplasm, perinuclear region. Nucleus, nucleolus  
Expressed in colon, placenta, liver and very weakly in exocervix. Increased

**Cellular Location**

**Tissue Location**

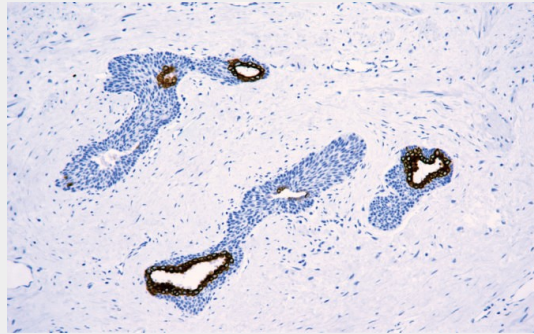
**expression observed in lymph nodes of breast carcinoma.**

## **CK18 - Protocols**

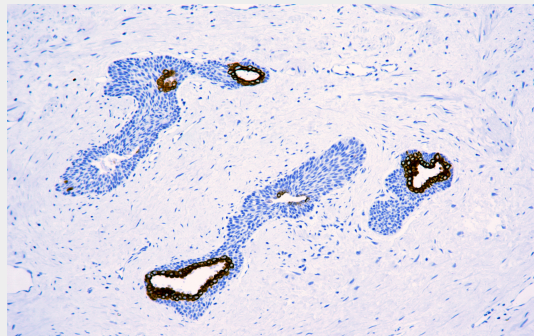
Provided below are standard protocols that you may find useful for product applications.

- [Western Blot](#)
- [Blocking Peptides](#)
- [Dot Blot](#)
- [Immunohistochemistry](#)
- [Immunofluorescence](#)
- [Immunoprecipitation](#)
- [Flow Cytometry](#)
- [Cell Culture](#)

## **CK18 - Images**



Prostate cancer



Immunohistochemical analysis of paraffin-embedded prostatic cancer tissue using AD80354 performed on the Abcarta® FAIP-30 Fully automated IHC platform. Tissue was fixed with formaldehyde at room temperature, antigen retrieval was by heat mediation with a Citrate buffer (pH6.0). Samples were incubated with primary antibody (Ready-to-use) for 15 min at room temperature. AmpSee™ Detection Systems [Abcepta:AR005] was used as the secondary antibody.