

TTF-1
Rabbit Monoclonal antibody(Mab)
Catalog # AD80352

Specification

TTF-1 - Product info

Application	IHC-P, IHC
Primary Accession	P43699
Reactivity	Human
Host	Rabbit
Clonality	Monoclonal
Calculated MW	38596

TTF-1 - Additional info

Gene ID	7080
Gene Name	NKX2-1 (HGNC:11825)

Other Names

Homeobox protein Nkx-2.1, Homeobox protein NK-2 homolog A, Thyroid nuclear factor 1, Thyroid transcription factor 1, TTF-1, Thyroid-specific enhancer-binding protein, T/EBP, NKX2-1 (http://www.genenames.org/cgi-bin/gene_symbol_report?hgnc_id=11825), NKX2A, TTF1, TTF1

Dilution

IHC-P~~Ready-to-use
IHC~~Ready-to-use

Storage

Maintain refrigerated at 2-8°C

Precautions

TTF-1 Antibody is for research use only and not for use in diagnostic or therapeutic procedures.

TTF-1 - Protein Information

Name NKX2-1 ([HGNC:11825](#))

Function

Transcription factor that binds and activates the promoter of thyroid specific genes such as thyroglobulin, thyroperoxidase, and thyrotropin receptor. Crucial in the maintenance of the thyroid differentiation phenotype. May play a role in lung development and surfactant homeostasis. Forms a regulatory loop with GRHL2 that coordinates lung epithelial cell morphogenesis and differentiation. Activates the transcription of GNRHR and

plays a role in enhancing the circadian oscillation of its gene expression. Represses the transcription of the circadian transcriptional repressor NR1D1 (By similarity).

Cellular Location

Nucleus

Tissue Location

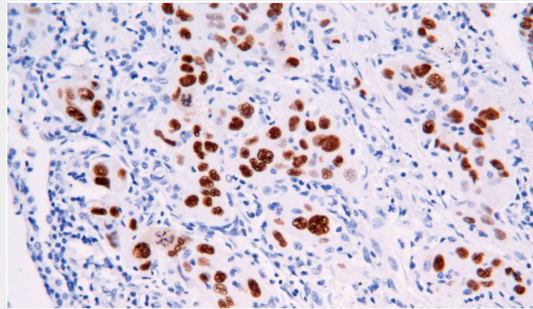
{ECO:0000250|UniProtKB:P50220}.
Thyroid and lung.

TTF-1 - Protocols

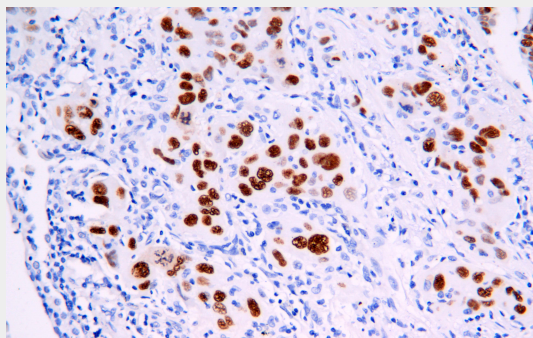
Provided below are standard protocols that you may find useful for product applications.

- [Western Blot](#)
- [Blocking Peptides](#)
- [Dot Blot](#)
- [Immunohistochemistry](#)
- [Immunofluorescence](#)
- [Immunoprecipitation](#)
- [Flow Cytometry](#)
- [Cell Culture](#)

TTF-1 - Images



Lung adenocarcinoma



Immunohistochemical analysis of paraffin-embedded tissue using AD80297 performed on the Abcarta® FAIP-30 Fully automated IHC platform. Tissue was fixed with formaldehyde at room temperature, antigen retrieval was by heat mediation with a Citrate buffer (pH6.0). Samples were incubated with primary antibody (Ready-to-use) for 15 min at room temperature. AmpSee™ Detection Systems [Abcepta:AR005] was used as the secondary antibody.