

MC Mesothelioma
Rabbit Monoclonal antibody(Mab)
Catalog # AD80343

Specification

MC Mesothelioma - Product info

Application	IHC-P, IHC
Reactivity	Human
Host	Rabbit
Clonality	Monoclonal

MC Mesothelioma - Additional info

Dilution

IHC-P~~Ready-to-use

IHC~~Ready-to-use

Storage

This product is stored at 2-8 °C, please use it within the expiration date.

Precautions

MC Antibody is for research use only and not for use in diagnostic or therapeutic procedures.

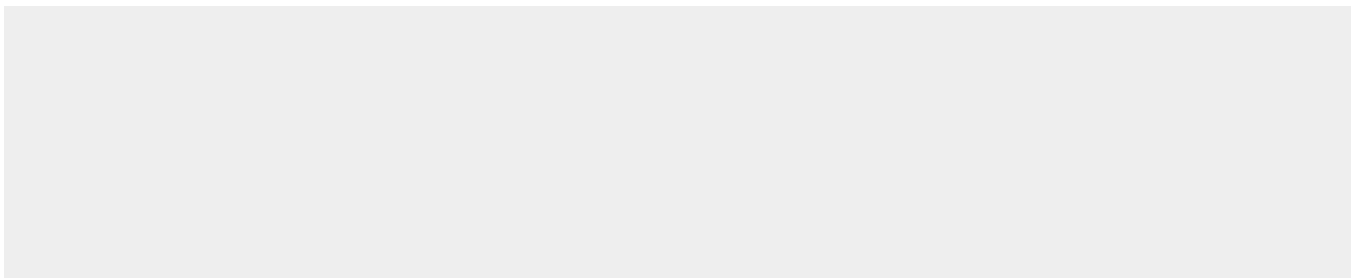
MC Mesothelioma - Protein Information

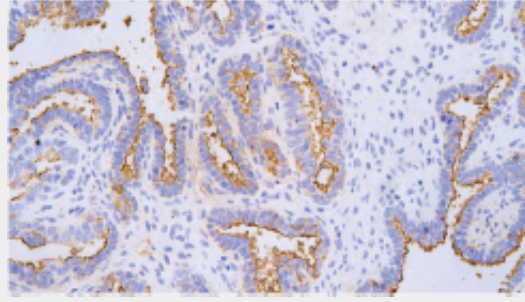
MC Mesothelioma - Protocols

Provided below are standard protocols that you may find useful for product applications.

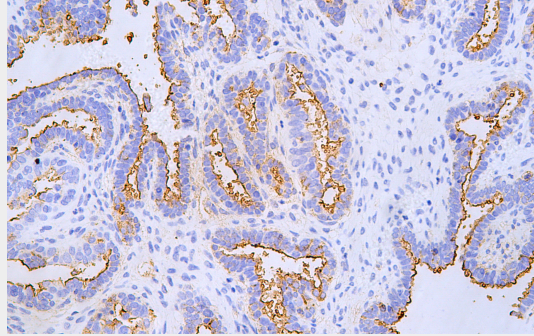
- [Western Blot](#)
- [Blocking Peptides](#)
- [Dot Blot](#)
- [Immunohistochemistry](#)
- [Immunofluorescence](#)
- [Immunoprecipitation](#)
- [Flow Cytometry](#)
- [Cell Culture](#)

MC Mesothelioma - Images





Ovarian carcinoma



Immunohistochemical analysis of paraffin-embedded ovarian Carcinoma tissue using AD80343 performed on the Abcarta® FAIP-30 Fully automated IHC platform. Tissue was fixed with formaldehyde at room temperature, antigen retrieval was by heat mediation with a EDTA buffer (pH9.0). Samples were incubated with primary antibody (Ready-to-use) for 15 min at room temperature. AmpSee™ Detection Systems [Abcepta:AR005] was used as the secondary antibody.