

Mammaglobin
Mouse Monoclonal antibody(Mab)
Catalog # AD80327

Specification

Mammaglobin - Product info

Application	IHC-P, IHC
Primary Accession	Q13296
Reactivity	Human
Host	Mouse
Clonality	Monoclonal
Calculated MW	10499

Mammaglobin - Additional info

Gene ID	4250
Gene Name	SCGB2A2
Other Names	Mammaglobin-A, Mammaglobin-1, Secretoglobin family 2A member 2, SCGB2A2, MGB1, UGB2

Dilution

IHC-P~~Ready-to-use
IHC~~Ready-to-use

Storage	This product is stored at 2-8 °C, please use it within the expiration date.
Precautions	Mammaglobin Antibody is for research use only and not for use in diagnostic or therapeutic procedures.

Mammaglobin - Protein Information

Name SCGB2A2

Synonyms	MGB1, UGB2
Cellular Location	Secreted.
Tissue Location	Mammary gland specific. Over-expressed in breast cancer

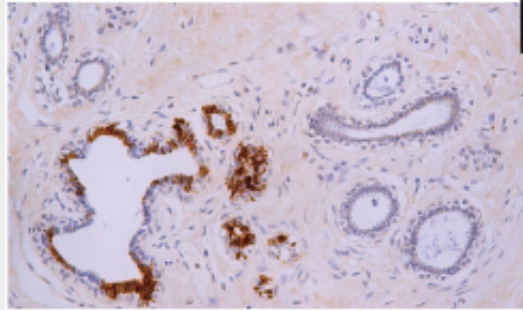
Mammaglobin - Protocols

Provided below are standard protocols that you may find useful for product applications.

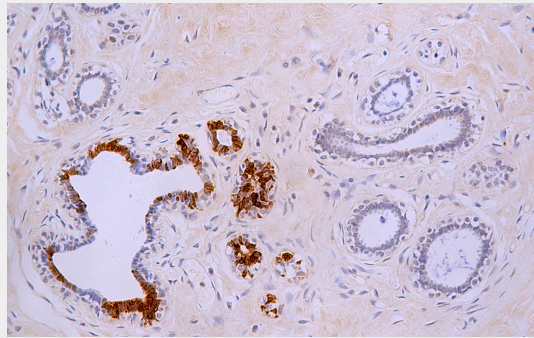
- [Western Blot](#)
- [Blocking Peptides](#)
- [Dot Blot](#)
- [Immunohistochemistry](#)
- [Immunofluorescence](#)

- [Immunoprecipitation](#)
- [Flow Cytometry](#)
- [Cell Culture](#)

Mammaglobin - Images



Breast



Immunohistochemical analysis of paraffin-embedded human breast tissue using AD80327 performed on the Abcarta® FAIP-30 Fully automated IHC platform. Tissue was fixed with formaldehyde at room temperature, antigen retrieval was by heat mediation with a EDTA buffer (pH9.0). Samples were incubated with primary antibody (Ready-to-use) for 15 min at room temperature. AmpSee™ Detection Systems [Abcepta:AR005] was used as the secondary antibody.