

LRP
Mouse Monoclonal antibody(Mab)
Catalog # AD80325

Specification

LRP - Product info

| | |
|-------------------|------------------------|
| Application | IHC-P |
| Primary Accession | Q07954 |
| Reactivity | Human |
| Host | Mouse |
| Clonality | Monoclonal |
| Calculated MW | 504606 |

LRP - Additional info

| | |
|-----------|-------------|
| Gene ID | 4035 |
| Gene Name | LRP1 |

Other Names

Pro-low-density lipoprotein receptor-related protein 1, LRP-1, Alpha-2-macroglobulin receptor, A2MR, Apolipoprotein E receptor, APOER, CD91, Low-density lipoprotein receptor-related protein 1 85 kDa subunit, LRP-85, Low-density lipoprotein receptor-related protein 1 515 kDa subunit, LRP-515, Low-density lipoprotein receptor-related protein 1 intracellular domain, LRPICD, LRP1 ([HGNC:6692](http://www.genenames.org/cgi-bin/gene_symbol_report?hgnc_id=6692)), A2MR, APR

Dilution

IHC-P~~Ready-to-use

Storage

This product is stored at 2-198 °C, please use it within the expiration date.

Precautions

LRP Antibody is for research use only and not for use in diagnostic or therapeutic procedures.

LRP - Protein Information

Name LRP1 ([HGNC:6692](#))

Synonyms

A2MR, APR

Function

Endocytic receptor involved in endocytosis and in phagocytosis of apoptotic cells. Required for early embryonic development. Involved in cellular lipid homeostasis. Involved in the plasma clearance of chylomicron remnants and activated LRPAP1 (alpha 2-macroglobulin), as well as the local metabolism of complexes between plasminogen activators and their endogenous inhibitors. May modulate

Cellular Location

cellular events, such as APP metabolism, kinase-dependent intracellular signaling, neuronal calcium signaling as well as neurotransmission (PubMed:[11907044](#), PubMed:[12888553](#), PubMed:[12713657](#)). Acts as an alpha-2- macroglobulin receptor (PubMed:[26142438](#)).

Low-density lipoprotein receptor-related protein 1 85 kDa subunit: Cell membrane; Single-pass type I membrane protein. Membrane, coated pit Low-density lipoprotein receptor-related protein 1 intracellular domain: Cytoplasm. Nucleus. Note=After cleavage, the intracellular domain (LRPICD) is detected both in the cytoplasm and in the nucleus
Most abundant in liver, brain and lung.

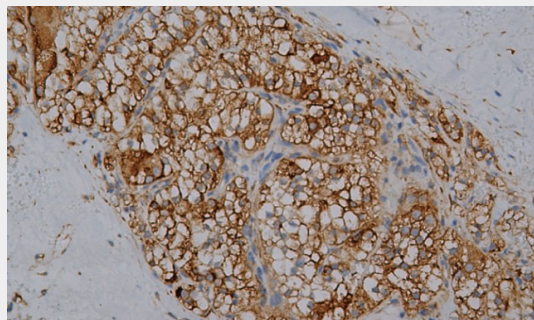
Tissue Location

LRP - Protocols

Provided below are standard protocols that you may find useful for product applications.

- [Western Blot](#)
- [Blocking Peptides](#)
- [Dot Blot](#)
- [Immunohistochemistry](#)
- [Immunofluorescence](#)
- [Immunoprecipitation](#)
- [Flow Cytometry](#)
- [Cell Culture](#)

LRP - Images



Kidney renal clear cell carcinoma