

**Lysozyme**  
**Rabbit Monoclonal antibody(Mab)**  
**Catalog # AD80310**

## Specification

---

### Lysozyme - Product info

Application	IHC-P
Primary Accession	<a href="#">P61626</a>
Reactivity	Human
Host	Rabbit
Clonality	Monoclonal
Calculated MW	16537

### Lysozyme - Additional info

Gene ID	4069
Gene Name	LYZ
<b>Other Names</b>	
Lysozyme C, 3.2.1.17, 1, 4-beta-N-acetylmuramidase C, LYZ, LZM	

#### Dilution

IHC-P~~Ready-to-use

#### Storage

**This product is stored at 2-8 °C, please use it within the expiration date.**

#### Precautions

**Lysozyme Antibody is for research use only and not for use in diagnostic or therapeutic procedures.**

### Lysozyme - Protein Information

#### Name LYZ

#### Synonyms

LZM

#### Function

**Lysozymes have primarily a bacteriolytic function; those in tissues and body fluids are associated with the monocyte-macrophage system and enhance the activity of immunoagents.**

#### Cellular Location

**Secreted.**

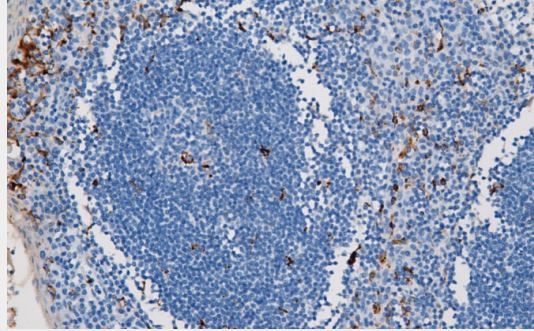
### Lysozyme - Protocols

Provided below are standard protocols that you may find useful for product applications.

- [Western Blot](#)
- [Blocking Peptides](#)
- [Dot Blot](#)

- [Immunohistochemistry](#)
- [Immunofluorescence](#)
- [Immunoprecipitation](#)
- [Flow Cytometry](#)
- [Cell Culture](#)

**Lysozyme - Images**



Tonsil