

CD16
Mouse Monoclonal antibody(Mab)
Catalog # AD80281**Specification**

CD16 - Product info

Application	IHC-P, IHC
Primary Accession	P08637
Reactivity	Human
Host	Mouse
Clonality	Monoclonal
Calculated MW	29089

CD16 - Additional info

Gene ID	2214
Gene Name	FCGR3A

Other Names

Low affinity immunoglobulin gamma Fc region receptor III-A, IgG Fc receptor III-A, CD16-II, CD16a antigen, Fc-gamma RIII-alpha, Fc-gamma RIII, Fc-gamma RIIIa, FcRIII, FcRIIIa, FcgammaRIIIA, FcR-10, IgG Fc receptor III-2, CD16a, FCGR3A {ECO:0000303|PubMed:23006327}

Dilution

IHC-P~~Ready-to-use

IHC~~Ready-to-use

Storage

Maintain refrigerated at 2-8°C

Precautions

CD16 Antibody is for research use only and not for use in diagnostic or therapeutic procedures.

CD16 - Protein Information

Name FCGR3A {ECO:0000303|PubMed:23006327}

Synonyms**Function**

CD16A, FCG3, FCGR3, IGFR3

Receptor for the Fc region of IgG. Binds complexed or aggregated IgG and also monomeric IgG. Mediates antibody-dependent cellular cytotoxicity (ADCC) and other antibody-dependent responses, such as phagocytosis.

Cellular Location

Cell membrane; Single-pass type I membrane protein. Secreted. Note=Exists also as a soluble receptor

Tissue Location

Expressed on natural killer cells, macrophages, subpopulation of T-cells,

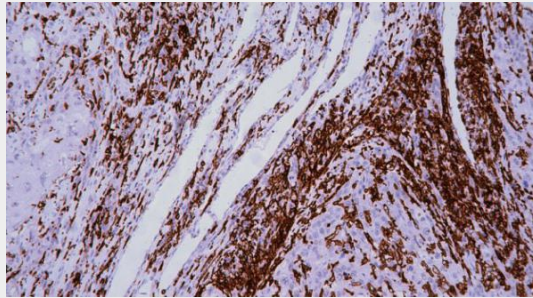
immature thymocytes and placental trophoblasts

CD16 - Protocols

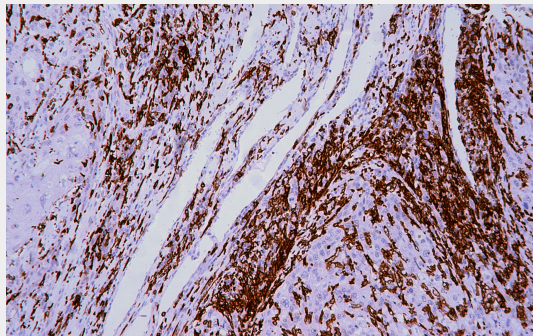
Provided below are standard protocols that you may find useful for product applications.

- [Western Blot](#)
- [Blocking Peptides](#)
- [Dot Blot](#)
- [Immunohistochemistry](#)
- [Immunofluorescence](#)
- [Immunoprecipitation](#)
- [Flow Cytometry](#)
- [Cell Culture](#)

CD16 - Images



Esophageal squamous cell carcinoma



Immunohistochemical analysis of paraffin-embedded esophageal squamous cell carcinomas tissue using AD80281 performed on the Abcarta® FAIP-30 Fully automated IHC platform. Tissue was fixed with formaldehyde at room temperature, antigen retrieval was by heat mediation with a EDTA buffer (pH9.0). Samples were incubated with primary antibody (Ready-to-use) for 15 min at room temperature. AmpSee™ Detection Systems [Abcepta:AR005] was used as the secondary antibody.