

Cyclin D1
Rabbit Monoclonal antibody(Mab)
Catalog # AD80273

Specification

Cyclin D1 - Product info

Application	IHC-P, IHC
Primary Accession	P24385
Reactivity	Human
Host	Rabbit
Clonality	Monoclonal
Calculated MW	33729

Cyclin D1 - Additional info

Gene ID	595
Gene Name	CCND1

Other Names

G1/S-specific cyclin-D1, B-cell lymphoma 1 protein, BCL-1, BCL-1 oncogene, PRAD1 oncogene, CCND1 {ECO:0000303|PubMed:8204893, ECO:0000312|HGNC:HGNC:1582}

Dilution

IHC-P~~Ready-to-use
IHC~~Ready-to-use

Storage	This product is stored at 2-8 °C, please use it within the expiration date.
Precautions	Cyclin D1 Antibody is for research use only and not for use in diagnostic or therapeutic procedures.

Cyclin D1 - Protein Information

Name CCND1 {ECO:0000303|PubMed:8204893, ECO:0000312|HGNC:HGNC:1582}

Synonyms	BCL1, PRAD1
Function	Regulatory component of the cyclin D1-CDK4 (DC) complex that phosphorylates and inhibits members of the retinoblastoma (RB) protein family including RB1 and regulates the cell-cycle during G(1)/S transition. Phosphorylation of RB1 allows dissociation of the transcription factor E2F from the RB/E2F complex and the subsequent transcription of E2F target genes which are responsible for the progression through the G(1) phase. Hypophosphorylates RB1 in early G(1) phase. Cyclin D-CDK4 complexes are

Cellular Location

major integrators of various mitogenic and antimitogenic signals. Also substrate for SMAD3, phosphorylating SMAD3 in a cell-cycle-dependent manner and repressing its transcriptional activity. Component of the ternary complex, cyclin D1/CDK4/CDKN1B, required for nuclear translocation and activity of the cyclin D-CDK4 complex. Exhibits transcriptional corepressor activity with INSM1 on the NEUROD1 and INS promoters in a cell cycle-independent manner.

Nucleus. Cytoplasm. Membrane.

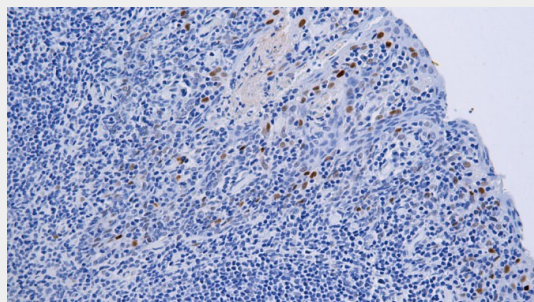
Note=Cyclin D-CDK4 complexes accumulate at the nuclear membrane and are then translocated to the nucleus through interaction with KIP/CIP family members

Cyclin D1 - Protocols

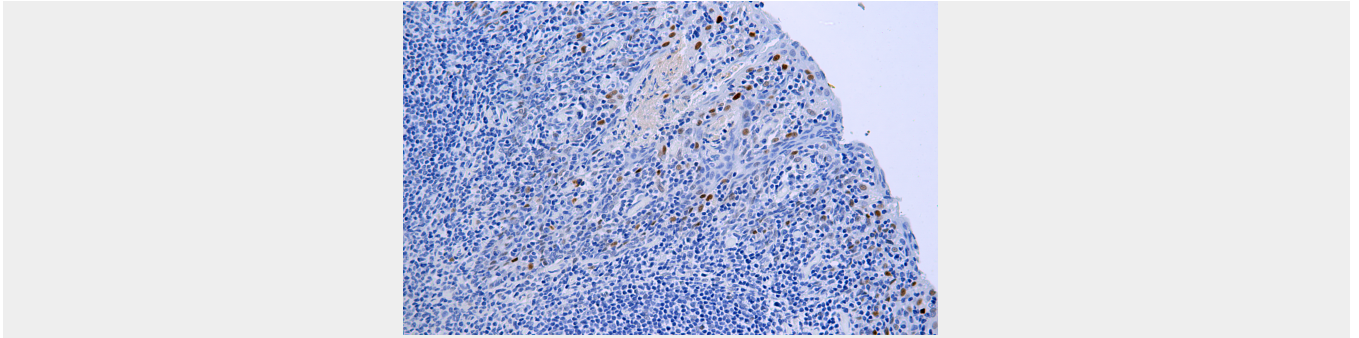
Provided below are standard protocols that you may find useful for product applications.

- [Western Blot](#)
- [Blocking Peptides](#)
- [Dot Blot](#)
- [Immunohistochemistry](#)
- [Immunofluorescence](#)
- [Immunoprecipitation](#)
- [Flow Cytometry](#)
- [Cell Culture](#)

Cyclin D1 - Images



Tonsil



Immunohistochemical analysis of paraffin-embedded human tonsil tissue using AD80273 performed on the Abcarta® FAIP-30 Fully automated IHC platform. Tissue was fixed with formaldehyde at room temperature, antigen retrieval was by heat mediation with a Citrate buffer (pH6.0). Samples were incubated with primary antibody (Ready-to-use) for 15 min at room temperature. AmpSee™ Detection Systems [Abcepta:AR005] was used as the secondary antibody.