

**HP**  
**Rabbit Polyclonal antibody(Pab)**  
**Catalog # AD80265**

## Specification

---

### HP - Product info

Application	IHC-P, IHC
Primary Accession	<a href="#">P00738</a>
Reactivity	Human
Host	Rabbit
Clonality	Polyclonal
Calculated MW	45205

### HP - Additional info

#### Other Names

Haptoglobin, Zonulin, Haptoglobin alpha chain, Haptoglobin beta chain, HP

#### Dilution

IHC-P~~Ready-to-use  
IHC~~Ready-to-use

Storage

Precautions

**This product is stored at 2-8 °C, please use it within the expiration date.  
Helicobacter phlori Antibody is for research use only and not for use in diagnostic or therapeutic procedures.**

### HP - Protein Information

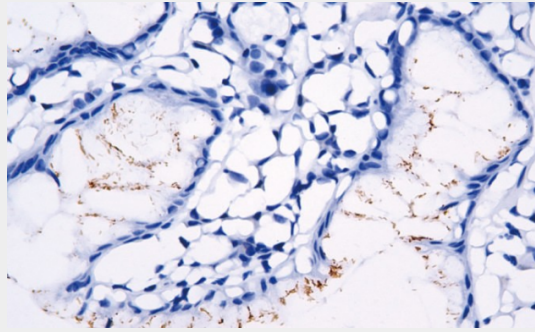
Name HP

### HP - Protocols

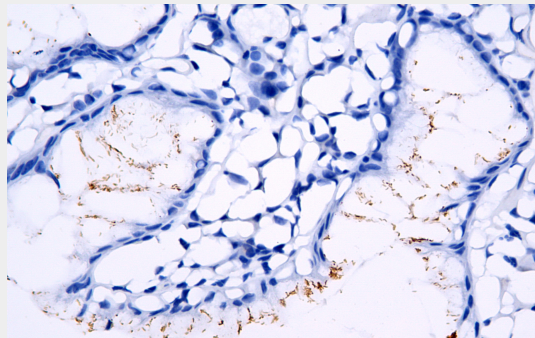
Provided below are standard protocols that you may find useful for product applications.

- [Western Blot](#)
- [Blocking Peptides](#)
- [Dot Blot](#)
- [Immunohistochemistry](#)
- [Immunofluorescence](#)
- [Immunoprecipitation](#)
- [Flow Cytometry](#)
- [Cell Culture](#)

### HP - Images



Stomach



Immunohistochemical analysis of paraffin-embedded human stomach tissue using AD80265 performed on the Abcarta® FAIP-30 Fully automated IHC platform. Tissue was fixed with formaldehyde at room temperature, antigen retrieval was by heat mediation with a Citrate buffer (pH 6.0). Samples were incubated with primary antibody (Ready-to-use) for 15 min at room temperature. AmpSee™ Detection Systems [Abcepta:AR005] was used as the secondary antibody.