

GCDFP-15
Rabbit Monoclonal antibody(Mab)
Catalog # AD80264

Specification

GCDFP-15 - Product info

Application	IHC-P, IHC
Primary Accession	P12273
Reactivity	Human
Host	Rabbit
Clonality	Monoclonal
Calculated MW	16572

GCDFP-15 - Additional info

Gene ID	5304
Gene Name	PIP

Other Names

Prolactin-inducible protein, Gross cystic disease fluid protein 15, GCDFP-15, Prolactin-induced protein, Secretory actin-binding protein, SABP, gp17, PIP, GCDFP15, GPIP4

Dilution

IHC-P~~Ready-to-use
IHC~~Ready-to-use

Storage	This product is stored at 2-149 °C, please use it within the expiration date.
Precautions	GCDFP-15 Antibody is for research use only and not for use in diagnostic or therapeutic procedures.

GCDFP-15 - Protein Information

Name PIP

Synonyms	GCDFP15, GPIP4
Cellular Location	Secreted.
Tissue Location	Expressed in pathological conditions of the mammary gland and in several exocrine tissues, such as the lacrimal, salivary, and sweat glands

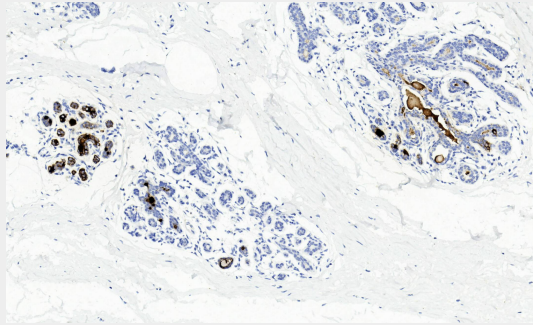
GCDFP-15 - Protocols

Provided below are standard protocols that you may find useful for product applications.

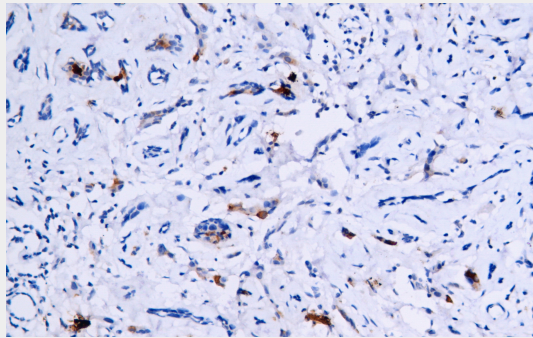
- [Western Blot](#)
- [Blocking Peptides](#)

- [Dot Blot](#)
- [Immunohistochemistry](#)
- [Immunofluorescence](#)
- [Immunoprecipitation](#)
- [Flow Cytometry](#)
- [Cell Culture](#)

GCDFP-15 - Images



Normal breast tissues



Immunohistochemical analysis of paraffin-embedded human normal breast tissue using AD80264 performed on the Abcarta® FAIP-30 Fully automated IHC platform. Tissue was fixed with formaldehyde at room temperature, antigen retrieval was by heat mediation with a Citrate buffer (pH6.0). Samples were incubated with primary antibody (Ready-to-use) for 15 min at room temperature. AmpSee™ Detection Systems [Abcepta:AR005] was used as the secondary antibody.