

**Calcitonin**  
**Rabbit Monoclonal antibody(Mab)**  
**Catalog # AD80258**

## Specification

---

### Calcitonin - Product info

Application	IHC-P, IHC
Primary Accession	<a href="#">P01258</a>
Reactivity	Human
Host	Rabbit
Clonality	Monoclonal
Calculated MW	15467

### Calcitonin - Additional info

Gene ID	796
Gene Name	CALCA
<b>Other Names</b>	
Calcitonin, Calcitonin, Katalcalcin, Calcitonin carboxyl-terminal peptide, CCP, PDN-21, CALCA, CALC1	

### Dilution

IHC-P~~Ready-to-use  
IHC~~Ready-to-use

Storage

**This product is stored at 2-42 °C, please use it within the expiration date.**

Precautions

**Calcitonin Antibody is for research use only and not for use in diagnostic or therapeutic procedures.**

### Calcitonin - Protein Information

**Name** CALCA

**Synonyms**  
**Function**

**CALC1**  
**Calcitonin causes a rapid but short-lived drop in the level of calcium and phosphate in blood by promoting the incorporation of those ions in the bones.**  
**Secreted.**

**Cellular Location**

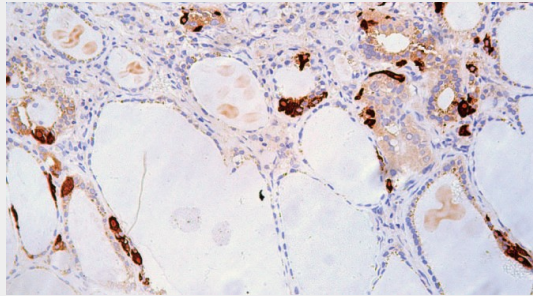
### Calcitonin - Protocols

Provided below are standard protocols that you may find useful for product applications.

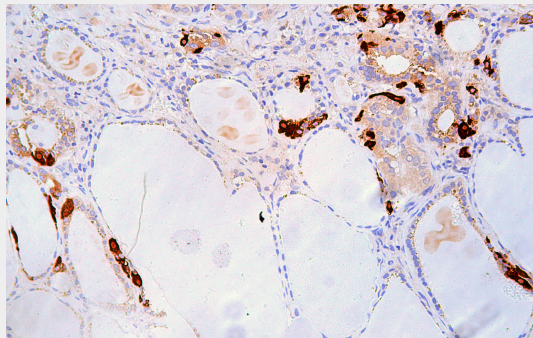
- [Western Blot](#)
- [Blocking Peptides](#)

- [Dot Blot](#)
- [Immunohistochemistry](#)
- [Immunofluorescence](#)
- [Immunoprecipitation](#)
- [Flow Cytometry](#)
- [Cell Culture](#)

### Calcitonin - Images



Papillary thyroid carcinoma,



Immunohistochemical analysis of paraffin-embedded papillary thyroid carcinoma; tissue using AD80258 performed on the Abcarta® FAIP-30 Fully automated IHC platform. Tissue was fixed with formaldehyde at room temperature, antigen retrieval was by heat mediation with a Citrate buffer (pH 6.0). Samples were incubated with primary antibody (Ready-to-use) for 15 min at room temperature. AmpSee™ Detection Systems [Abcepta:AR005] was used as the secondary antibody.