

Pax-8
Rabbit Monoclonal antibody(Mab)
Catalog # AD80244

Specification

Pax-8 - Product info

Application	IHC-P, IHC
Primary Accession	Q06710
Reactivity	Human
Host	Rabbit
Clonality	Monoclonal
Calculated MW	48218

Pax-8 - Additional info

Gene ID	7849
Gene Name	PAX8
Other Names	
Paired box protein Pax-8, PAX8	

Dilution

IHC-P~~Ready-to-use
IHC~~Ready-to-use

Storage

This product is stored at 2-253 °C, please use it within the expiration date.

Precautions

Pax-8 Antibody is for research use only and not for use in diagnostic or therapeutic procedures.

Pax-8 - Protein Information

Name PAX8

Function

Transcription factor for the thyroid-specific expression of the genes exclusively expressed in the thyroid cell type, maintaining the functional differentiation of such cells.

Cellular Location

Nucleus.

Tissue Location

Expressed in the excretory system, thyroid gland and Wilms tumors

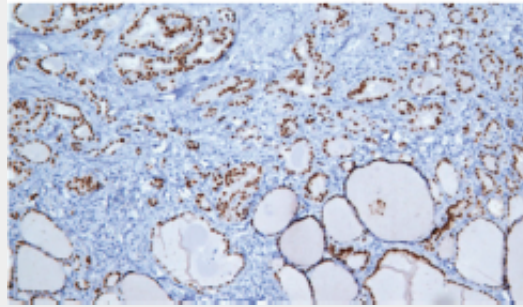
Pax-8 - Protocols

Provided below are standard protocols that you may find useful for product applications.

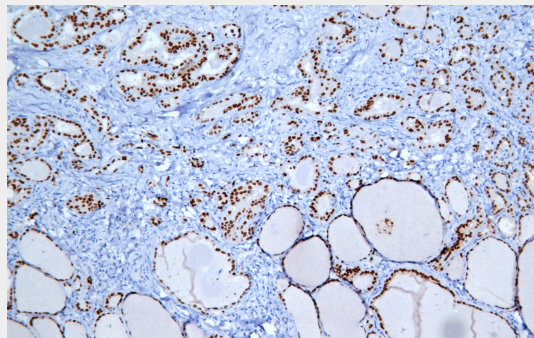
- [Western Blot](#)

- [Blocking Peptides](#)
- [Dot Blot](#)
- [Immunohistochemistry](#)
- [Immunofluorescence](#)
- [Immunoprecipitation](#)
- [Flow Cytometry](#)
- [Cell Culture](#)

Pax-8 - Images



Papillary thyroid carcinoma,



Immunohistochemical analysis of paraffin-embedded tissue using AD80244 performed on the Abcarta® FAIP-30 Fully automated IHC platform. Tissue was fixed with formaldehyde at room temperature, antigen retrieval was by heat mediation with a EDTA buffer (pH9.0). Samples were incubated with primary antibody (Ready-to-use) for 15 min at room temperature. AmpSee™ Detection Systems [Abcepta:AR005] was used as the secondary antibody.