

**Langerin**  
Rabbit Monoclonal antibody(Mab)  
Catalog # AD80237

## Specification

---

### Langerin - Product info

Application	IHC-P, IHC
Primary Accession	<a href="#">O9UJ71</a>
Reactivity	Human
Host	Rabbit
Clonality	Monoclonal
Calculated MW	36725

### Langerin - Additional info

Gene ID	50489
Gene Name	CD207
<b>Other Names</b>	
C-type lectin domain family 4 member K, Langerin, CD207, CD207, CLEC4K	

### Dilution

IHC-P~~Ready-to-use  
IHC~~Ready-to-use

Storage	<b>This product is stored at 2-8 °C, please use it within the expiration date.</b>
Precautions	<b>Langerin Antibody is for research use only and not for use in diagnostic or therapeutic procedures.</b>

### Langerin - Protein Information

**Name** CD207

Synonyms	CLEC4K
Function	<b>Calcium-dependent lectin displaying mannose-binding specificity. Induces the formation of Birbeck granules (BGs); is a potent regulator of membrane superimposition and zippering. Binds to sulfated as well as mannosylated glycans, keratan sulfate (KS) and beta-glucans. Facilitates uptake of antigens and is involved in the routing and/or processing of antigen for presentation to T cells. Major receptor on primary Langerhans cells for Candida species, Saccharomyces species, and Malassezia furfur. Protects against human immunodeficiency virus-1</b>

Cellular Location

Tissue Location

**(HIV-1) infection. Binds to high-mannose structures present on the envelope glycoprotein which is followed by subsequent targeting of the virus to the Birbeck granules leading to its rapid degradation.**

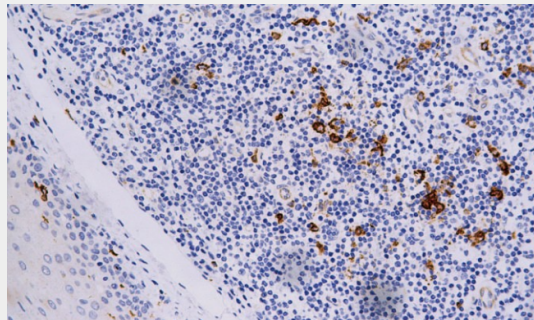
**Membrane; Single-pass type II membrane protein. Note=Found in Birbeck granules (BGs), which are organelles consisting of superimposed and zippered membranes Exclusively expressed by Langerhans cells. Expressed in astrocytoma and malignant ependymoma, but not in normal brain tissues.**

### Langerin - Protocols

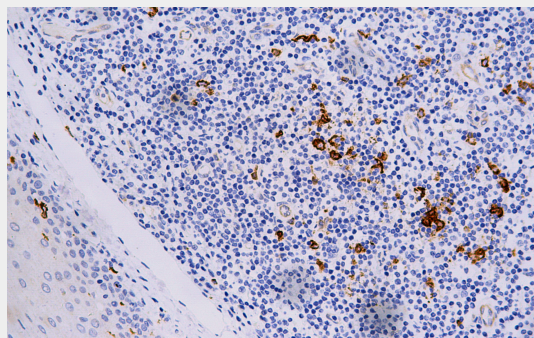
Provided below are standard protocols that you may find useful for product applications.

- [Western Blot](#)
- [Blocking Peptides](#)
- [Dot Blot](#)
- [Immunohistochemistry](#)
- [Immunofluorescence](#)
- [Immunoprecipitation](#)
- [Flow Cytometry](#)
- [Cell Culture](#)

### Langerin - Images



Tonsil



Immunohistochemical analysis of paraffin-embedded human tonsil tissue using AD80237 performed on the Abcarta® FAIP-30 Fully automated IHC platform. Tissue was fixed with

formaldehyde at room temperature, antigen retrieval was by heat mediation with a EDTA buffer (pH9. 0). Samples were incubated with primary antibody(Ready-to-use) for 15 min at room temperature. AmpSee™ Detection Systems [Abcepta:AR005] was used as the secondary antibody.