

melan A
Mouse Monoclonal antibody(Mab)
Catalog # AD80231

Specification

melan A - Product info

Application	IHC-P, IHC
Primary Accession	Q16655
Reactivity	Human
Host	Mouse
Clonality	Monoclonal
Calculated MW	13157

melan A - Additional info

Gene ID	2315
Gene Name	MLANA

Other Names

Melanoma antigen recognized by T-cells 1, MART-1, Antigen LB39-AA, Antigen SK29-AA, Protein Melan-A, MLANA, MART1

Dilution

IHC-P~~Ready-to-use
IHC~~Ready-to-use

Storage	This product is stored at 2-207 °C, please use it within the expiration date.
Precautions	MART-1/melan A Antibody is for research use only and not for use in diagnostic or therapeutic procedures.

melan A - Protein Information

Name MLANA

Synonyms
Function

MART1

Involved in melanosome biogenesis by ensuring the stability of GPR143. Plays a vital role in the expression, stability, trafficking, and processing of melanocyte protein PMEL, which is critical to the formation of stage II melanosomes. Endoplasmic reticulum membrane; Single-pass type III membrane protein. Golgi apparatus. Golgi apparatus, trans-Golgi network membrane. Melanosome. Note=Also found in small vesicles and tubules dispersed over the entire cytoplasm. A small fraction of the

Cellular Location

protein is inserted into the membrane in an inverted orientation. Inversion of membrane topology results in the relocalization of the protein from a predominant Golgi/post- Golgi area to the endoplasmic reticulum. Melanoma cells expressing the protein with an inverted membrane topology are more effectively recognized by specific cytolytic T-lymphocytes than those expressing the protein in its native membrane orientation. Expression is restricted to melanoma and melanocyte cell lines and retina

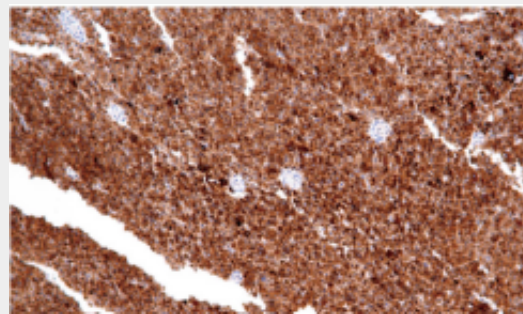
Tissue Location

melan A - Protocols

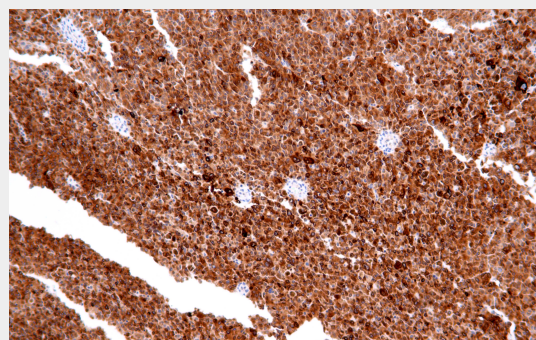
Provided below are standard protocols that you may find useful for product applications.

- [Western Blot](#)
- [Blocking Peptides](#)
- [Dot Blot](#)
- [Immunohistochemistry](#)
- [Immunofluorescence](#)
- [Immunoprecipitation](#)
- [Flow Cytometry](#)
- [Cell Culture](#)

melan A - Images



Malignant melanoma



Immunohistochemical analysis of paraffin-embedded human malignant melanoma tissue using AD80231 performed on the Abcarta® FAIP-30 Fully automated IHC platform. Tissue was fixed with formaldehyde at room temperature, antigen retrieval was by heat mediation with a EDTA buffer

(pH9.0). Samples were incubated with primary antibody(Ready-to-use) for 15 min at room temperature. AmpSee™ Detection Systems [Abcepta:AR005] was used as the secondary antibody.