

**CD56**  
Mouse Monoclonal antibody(Mab)  
Catalog # AD80211

## Specification

---

### CD56 - Product info

Application	IHC-P, IHC
Primary Accession	<a href="#">P13591</a>
Reactivity	Human
Host	Mouse
Clonality	Monoclonal
Calculated MW	94574

### CD56 - Additional info

Gene ID	4684
Gene Name	NCAM1
<b>Other Names</b>	Neural cell adhesion molecule 1, N-CAM-1, NCAM-1, CD56, NCAM1, NCAM

### Dilution

IHC-P~~Ready-to-use  
IHC~~Ready-to-use

### Storage

Maintain refrigerated at 2-8°C

### Precautions

**CD56 Antibody is for research use only and not for use in diagnostic or therapeutic procedures.**

### CD56 - Protein Information

**Name** NCAM1 ([HGNC:7656](#))

**Synonyms**  
**Function**

**NCAM**  
This protein is a cell adhesion molecule involved in neuron-neuron adhesion, neurite fasciculation, outgrowth of neurites, etc.

**Cellular Location**

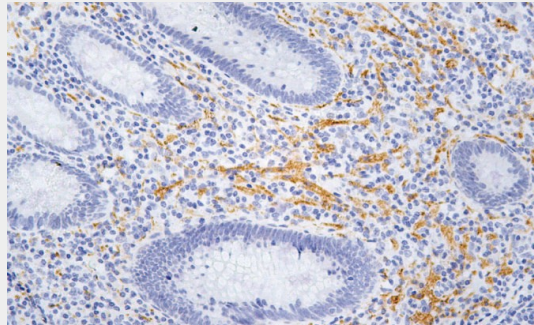
**Isoform 1:** Cell membrane; **Single-pass type I membrane protein** **Isoform 3:** Cell membrane; **Lipid-anchor, GPI- anchor** **Isoform 5:** Secreted.

### CD56 - Protocols

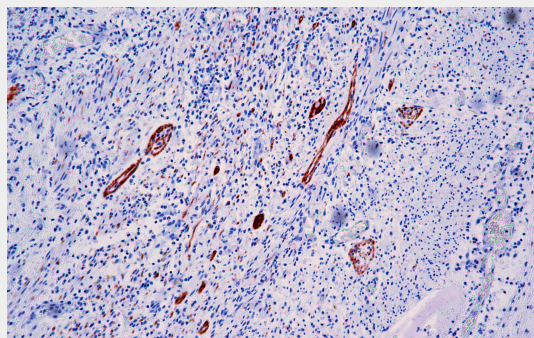
Provided below are standard protocols that you may find useful for product applications.

- [Western Blot](#)
- [Blocking Peptides](#)
- [Dot Blot](#)
- [Immunohistochemistry](#)
- [Immunofluorescence](#)
- [Immunoprecipitation](#)
- [Flow Cytometry](#)
- [Cell Culture](#)

## CD56 - Images



Pancreas



Immunohistochemical analysis of paraffin-embedded vermiform appendix tissue using AD80211 performed on the Abcarta® FAIP-30 Fully automated IHC platform. Tissue was fixed with formaldehyde at room temperature, antigen retrieval was by heat mediation with a Citrate buffer (pH 6.0). Samples were incubated with primary antibody (Ready-to-use) for 15 min at room temperature. AmpSee™ Detection Systems [Abcepta:AR005] was used as the secondary antibody.