

**CD21**  
**Rabbit Monoclonal antibody(Mab)**  
**Catalog # AD80208**

## Specification

---

### CD21 - Product info

Application	IHC-P, IHC
Primary Accession	<a href="#">P20023</a>
Reactivity	Human
Host	Rabbit
Clonality	Monoclonal
Calculated MW	112916

### CD21 - Additional info

Gene ID	1380
Gene Name	CR2
<b>Other Names</b>	
Complement receptor type 2, Cr2, Complement C3d receptor, Epstein-Barr virus receptor, EBV receptor, CD21, CR2, C3DR	

#### Dilution

IHC-P~~Ready-to-use  
IHC~~Ready-to-use

#### Storage

Maintain refrigerated at 2-8°C

#### Precautions

**CD21 Antibody is for research use only and not for use in diagnostic or therapeutic procedures.**

### CD21 - Protein Information

#### Name CR2

Synonyms  
Function

**C3DR**  
Receptor for complement C3, for the Epstein-Barr virus on human B-cells and T-cells and for HNRNPU (PubMed:[7753047](#)). Participates in B lymphocytes activation (PubMed:[7753047](#)).

Cellular Location

Cell membrane; Single-pass type I membrane protein

Tissue Location

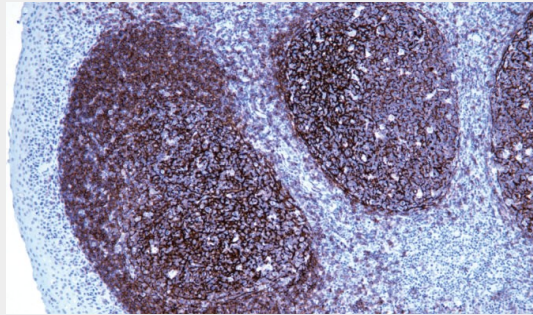
Mature B-lymphocytes, T-lymphocytes, pharyngeal epithelial cells, astrocytes and follicular dendritic cells of the spleen

## CD21 - Protocols

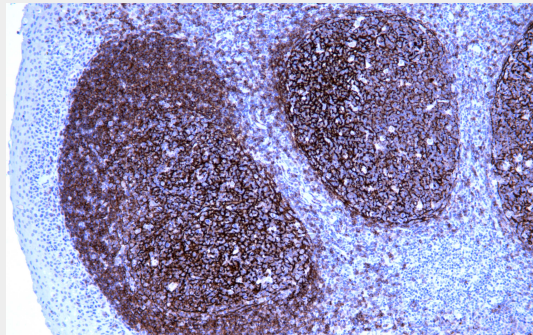
Provided below are standard protocols that you may find useful for product applications.

- [Western Blot](#)
- [Blocking Peptides](#)
- [Dot Blot](#)
- [Immunohistochemistry](#)
- [Immunofluorescence](#)
- [Immunoprecipitation](#)
- [Flow Cytometry](#)
- [Cell Culture](#)

## CD21 - Images



Tonsil



Immunohistochemical analysis of paraffin-embedded human tonsil tissue using AD80208 performed on the Abcarta® FAIP-30 Fully automated IHC platform. Tissue was fixed with formaldehyde at room temperature, antigen retrieval was by heat mediation with a EDTA buffer (pH 9.0). Samples were incubated with primary antibody (Ready-to-use) for 15 min at room temperature. AmpSee™ Detection Systems [Abcepta:AR005] was used as the secondary antibody.