

CDX-2
Rabbit Monoclonal antibody(Mab)
Catalog # AD80207

Specification

CDX-2 - Product info

Application	IHC-P, IHC
Primary Accession	Q99626
Reactivity	Human
Host	Rabbit
Clonality	Monoclonal
Calculated MW	33520

CDX-2 - Additional info

Gene ID	1045
Gene Name	CDX2
Other Names	
Homeobox protein CDX-2, CDX-3, Caudal-type homeobox protein 2, CDX2, CDX3	

Dilution

IHC-P~~Ready-to-use
IHC~~Ready-to-use

Storage	This product is stored at 2-8 °C, please use it within the expiration date.
Precautions	CDX-2 Antibody is for research use only and not for use in diagnostic or therapeutic procedures.

CDX-2 - Protein Information

Name CDX2

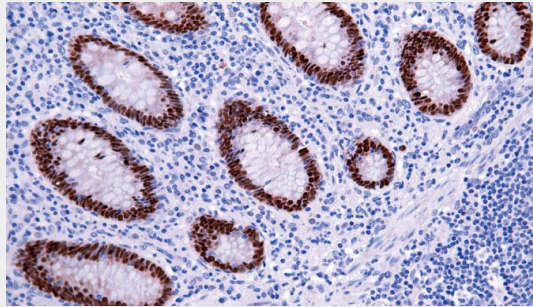
Synonyms	CDX3
Function	Involved in the transcriptional regulation of multiple genes expressed in the intestinal epithelium. Important in broad range of functions from early differentiation to maintenance of the intestinal epithelial lining of both the small and large intestine. Binds preferentially to methylated DNA (PubMed:28473536).
Cellular Location	Nucleus.

CDX-2 - Protocols

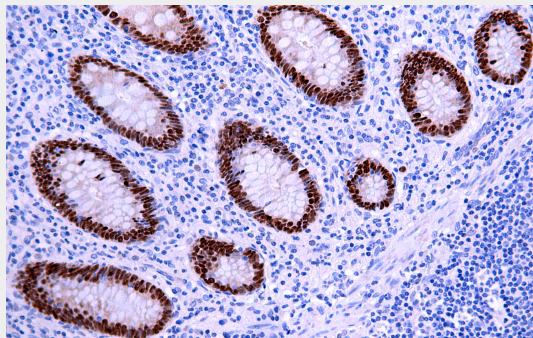
Provided below are standard protocols that you may find useful for product applications.

- [Western Blot](#)
- [Blocking Peptides](#)
- [Dot Blot](#)
- [Immunohistochemistry](#)
- [Immunofluorescence](#)
- [Immunoprecipitation](#)
- [Flow Cytometry](#)
- [Cell Culture](#)

CDX-2 - Images



Colon cancer



Immunohistochemical analysis of paraffin-embedded human pancreas tissue using AD80207 performed on the Abcarta® FAIP-30 Fully automated IHC platform. Tissue was fixed with formaldehyde at room temperature, antigen retrieval was by heat mediation with a Citrate buffer (pH6.0). Samples were incubated with primary antibody (Ready-to-use) for 15 min at room temperature. AmpSee™ Detection Systems [Abcepta:AR005] was used as the secondary antibody.