

**STAT6**  
**Rabbit Monoclonal antibody(Mab)**  
**Catalog # AD80204**

**Specification**

---

**STAT6 - Product info**

Application	IHC-P, IHC
Primary Accession	<a href="#">P42226</a>
Reactivity	Human
Host	Rabbit
Clonality	Monoclonal
Calculated MW	94135

**STAT6 - Additional info**

Gene ID	6778
Gene Name	STAT6
<b>Other Names</b>	
Signal transducer and activator of transcription 6, IL-4 Stat, STAT6	

**Dilution**

IHC-P~~Ready-to-use  
IHC~~Ready-to-use

Storage	<b>This product is stored at 2-8 °C, please use it within the expiration date.</b>
Precautions	<b>STAT6 Antibody is for research use only and not for use in diagnostic or therapeutic procedures.</b>

**STAT6 - Protein Information**

**Name** STAT6

<b>Function</b>	<b>Carries out a dual function: signal transduction and activation of transcription. Involved in IL4/interleukin-4- and IL3/interleukin-3-mediated signaling.</b>
<b>Cellular Location</b>	<b>Cytoplasm. Nucleus. Note=Translocated into the nucleus in response to phosphorylation</b>

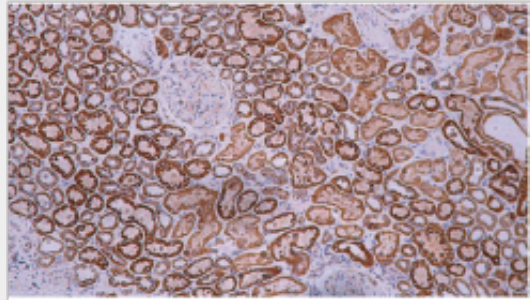
**STAT6 - Protocols**

Provided below are standard protocols that you may find useful for product applications.

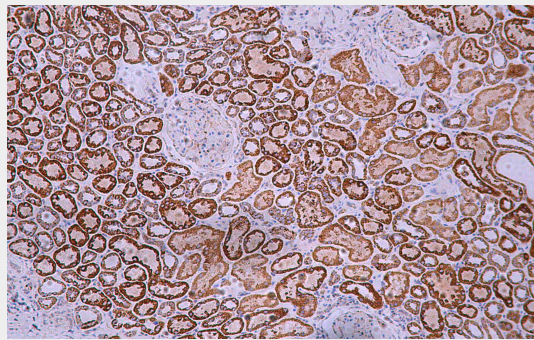
- [Western Blot](#)
- [Blocking Peptides](#)

- [Dot Blot](#)
- [Immunohistochemistry](#)
- [Immunofluorescence](#)
- [Immunoprecipitation](#)
- [Flow Cytometry](#)
- [Cell Culture](#)

### STAT6 - Images



Kidney



Immunohistochemical analysis of paraffin-embedded colorectal carcinoma; tissue using AD80280 performed on the Abcarta® FAIP-30 Fully automated IHC platform. Tissue was fixed with formaldehyde at room temperature, antigen retrieval was by heat mediation with a Citrate buffer (pH6.0). Samples were incubated with primary antibody (Ready-to-use) for 15 min at room temperature. AmpSee™ Detection Systems [Abcepta:AR005] was used as the secondary antibody.