

TFE3

Mouse Monoclonal antibody(Mab)

Catalog # AD80203

Specification

TFE3 - Product info

Application	IHC-P
Primary Accession	P19532
Reactivity	Human
Host	Mouse
Clonality	Monoclonal
Calculated MW	61521

TFE3 - Additional info

Gene ID	7030
Gene Name	TFE3

Other Names

Transcription factor E3, Class E basic helix-loop-helix protein 33, bHLHe33, TFE3
{ECO:0000303|PubMed:9393982, ECO:0000312|HGNC:HGNC:11752}

Dilution

IHC-P~~Ready-to-use

Storage	This product is stored at 2-8 °C, please use it within the expiration date.
Precautions	TFE3 Antibody is for research use only and not for use in diagnostic or therapeutic procedures.

TFE3 - Protein Information**Name** TFE3 {ECO:0000303|PubMed:9393982, ECO:0000312|HGNC:HGNC:11752}

Synonyms	BHLHE33
Function	Transcription factor that specifically recognizes and binds E-box sequences (5'-CANNTG-3'). Efficient DNA-binding requires dimerization with itself or with another MiT/TFE family member such as TFEB or MITF. In association with TFEB, activates the expression of CD40L in T-cells, thereby playing a role in T-cell-dependent antibody responses in activated CD4(+) T-cells and thymus-dependent humoral immunity. Specifically recognizes the MUE3 box, a subset of E-boxes, present in the immunoglobulin enhancer. It also binds

Cellular Location
Tissue Location

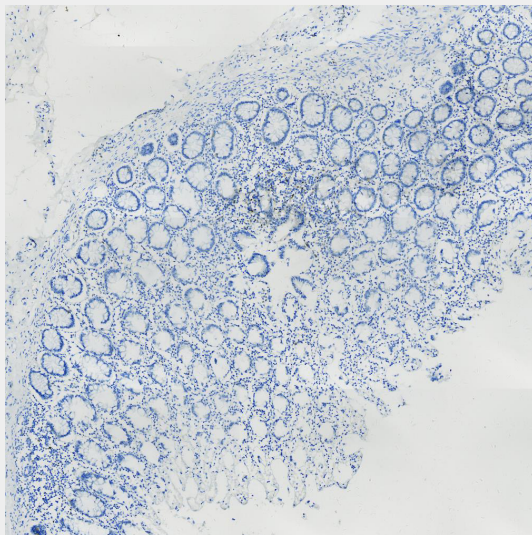
**very well to a USF/MLTF site.
Nucleus.
Ubiquitous in fetal and adult tissues.**

TFE3 - Protocols

Provided below are standard protocols that you may find useful for product applications.

- [Western Blot](#)
- [Blocking Peptides](#)
- [Dot Blot](#)
- [Immunohistochemistry](#)
- [Immunofluorescence](#)
- [Immunoprecipitation](#)
- [Flow Cytometry](#)
- [Cell Culture](#)

TFE3 - Images



Pancreas