

**MUM1**  
**Rabbit Monoclonal antibody(Mab)**  
**Catalog # AD80198****Specification**

---

**MUM1 - Product info**

Application	IHC-P, IHC
Primary Accession	<a href="#">Q2TAK8</a>
Reactivity	Human
Host	Rabbit
Clonality	Monoclonal
Calculated MW	78636

**MUM1 - Additional info**

Gene ID	84939
Gene Name	PWWP3A ( <a href="#">HGNC:29641</a> )

**Other Names**

PWWP domain-containing DNA repair factor 3A, PWWP3A, Mutated melanoma-associated antigen 1, MUM-1, PWWP domain-containing protein MUM1, Protein expandere, PWWP3A ([http://www.genenames.org/cgi-bin/gene\\_symbol\\_report?hgnc\\_id=29641](http://www.genenames.org/cgi-bin/gene_symbol_report?hgnc_id=29641))

**Dilution**

IHC-P~~Ready-to-use  
IHC~~Ready-to-use

**Storage**

Maintain refrigerated at 2-8°C

**Precautions**

**MUM1 Antibody is for research use only and not for use in diagnostic or therapeutic procedures.**

**MUM1 - Protein Information**

**Name** PWWP3A ([HGNC:29641](#))

**Function**

**Involved in the DNA damage response pathway by contributing to the maintenance of chromatin architecture. Recruited to the vicinity of DNA breaks by TP53BP1 and plays an accessory role to facilitate damage-induced chromatin changes and promoting chromatin relaxation. Required for efficient DNA repair and cell survival following DNA damage.**

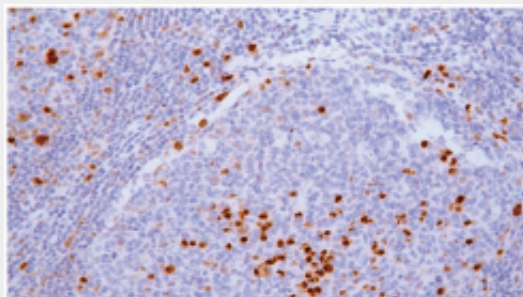
**Cellular Location**

**Nucleus. Note=Recruited to DNA damage**

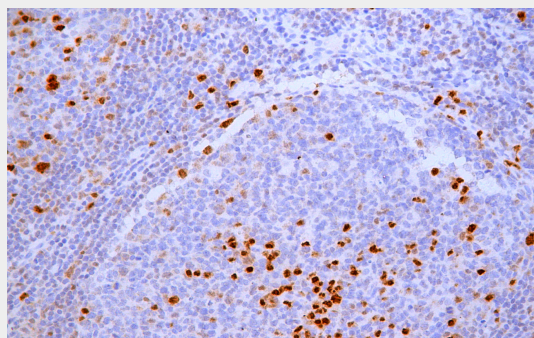
**sites via its interaction with the BRCT  
domain of TP53BP1****MUM1 - Protocols**

Provided below are standard protocols that you may find useful for product applications.

- [Western Blot](#)
- [Blocking Peptides](#)
- [Dot Blot](#)
- [Immunohistochemistry](#)
- [Immunofluorescence](#)
- [Immunoprecipitation](#)
- [Flow Cytometry](#)
- [Cell Culture](#)

**MUM1 - Images**

Tonsil



Immunohistochemical analysis of paraffin-embedded human tonsil tissue using AD80198 performed on the Abcarta® FAIP-30 Fully automated IHC platform. Tissue was fixed with formaldehyde at room temperature, antigen retrieval was by heat mediation with a EDTA buffer (pH9.0). Samples were incubated with primary antibody (Ready-to-use) for 15 min at room temperature. AmpSee™ Detection Systems [Abcepta:AR005] was used as the secondary antibody.