

Galectin-3
Rabbit Monoclonal antibody(Mab)
Catalog # AD80187

Specification

Galectin-3 - Product info

Application	IHC-P, IHC
Primary Accession	P17931
Reactivity	Human
Host	Rabbit
Clonality	Monoclonal
Calculated MW	26152

Galectin-3 - Additional info

Gene ID	3958
Gene Name	LGALS3

Other Names

Galectin-3, Gal-3, 35 kDa lectin, Carbohydrate-binding protein 35, CBP 35, Galactose-specific lectin 3, Galactoside-binding protein, GALBP, IgE-binding protein, L-31, Laminin-binding protein, Lectin L-29, Mac-2 antigen, LGALS3 (http://www.genenames.org/cgi-bin/gene_symbol_report?hgnc_id=6563), [HGNC:6563](#)), MAC2

Dilution

IHC-P~~Ready-to-use
IHC~~Ready-to-use

Storage	This product is stored at 2-8 °C, please use it within the expiration date.
Precautions	Galectin-3 Antibody is for research use only and not for use in diagnostic or therapeutic procedures.

Galectin-3 - Protein Information

Name LGALS3 ([HGNC:6563](#))

Synonyms	MAC2
Function	Galactose-specific lectin which binds IgE. May mediate with the alpha-3, beta-1 integrin the stimulation by CSPG4 of endothelial cells migration. Together with DMBT1, required for terminal differentiation of columnar epithelial cells during early embryogenesis (By similarity). In the nucleus: acts as a pre-mRNA splicing factor. Involved in acute inflammatory responses including neutrophil activation

Cellular Location

Tissue Location

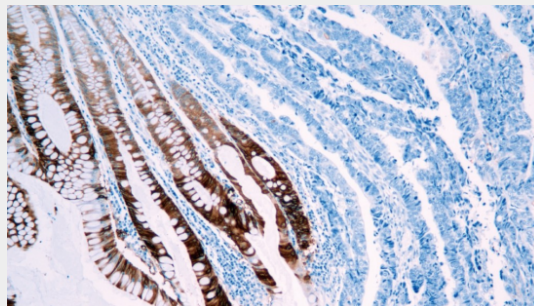
and adhesion, chemoattraction of monocytes macrophages, opsonization of apoptotic neutrophils, and activation of mast cells. Together with TRIM16, coordinates the recognition of membrane damage with mobilization of the core autophagy regulators ATG16L1 and BECN1 in response to damaged endomembranes. Cytoplasm. Nucleus. Secreted. Note=Secreted by a non-classical secretory pathway and associates with the cell surface
A major expression is found in the colonic epithelium. It is also abundant in the activated macrophages Expressed in fetal membranes.

Galectin-3 - Protocols

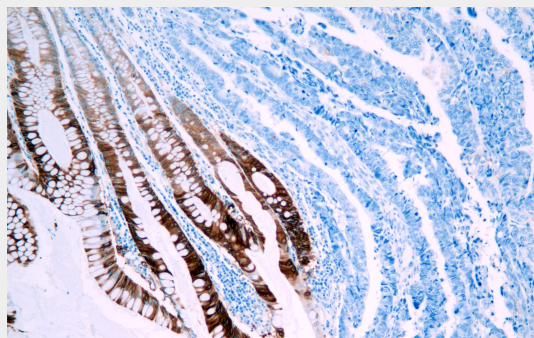
Provided below are standard protocols that you may find useful for product applications.

- [Western Blot](#)
- [Blocking Peptides](#)
- [Dot Blot](#)
- [Immunohistochemistry](#)
- [Immunofluorescence](#)
- [Immunoprecipitation](#)
- [Flow Cytometry](#)
- [Cell Culture](#)

Galectin-3 - Images



Colon cancer



Immunohistochemical analysis of paraffin-embedded colorectal carcinoma; tissue using AD80187 performed on the Abcarta® FAIP-30 Fully automated IHC platform. Tissue was fixed with formaldehyde at room temperature, antigen retrieval was by heat mediation with a EDTA buffer (pH9.0). Samples were incubated with primary antibody (Ready-to-use) for 15 min at room temperature. AmpSee™ Detection Systems [Abcepta:AR005] was used as the secondary antibody.