

**CK5&6**  
**Mouse Monoclonal antibody(Mab)**  
**Catalog # AD80169****Specification**

---

**CK5&6 - Product info**

Application	<b>IHC-P, IHC</b>
Primary Accession	<a href="#">P13647</a>
Reactivity	<b>Human</b>
Host	<b>Mouse</b>
Clonality	<b>Monoclonal</b>
Calculated MW	<b>62378</b>

**CK5&6 - Additional info**

Gene ID	<b>3852</b>
Gene Name	<b>KRT5</b>

**Other Names**

Keratin, type II cytoskeletal 5, 58 kDa cytokeratin, Cytokeratin-5, CK-5, Keratin-5, K5, Type-II keratin Kb5, KRT5

**Dilution**

IHC-P~~Ready-to-use  
IHC~~Ready-to-use

**Storage**

Maintain refrigerated at 2-8°C

**Precautions**

**CK5&6 Antibody is for research use only and not for use in diagnostic or therapeutic procedures.**

**CK5&6 - Protein Information**

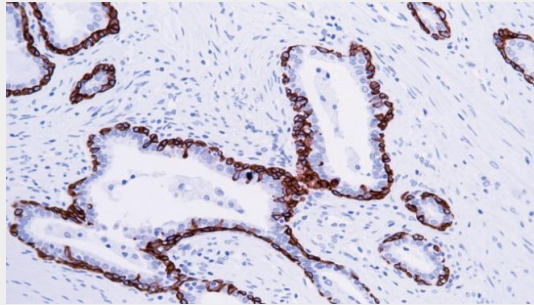
**Name** KRT5

**CK5&6 - Protocols**

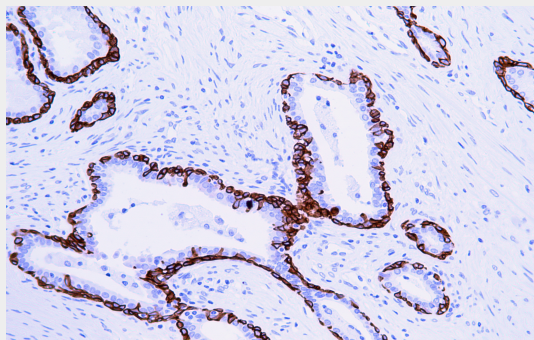
Provided below are standard protocols that you may find useful for product applications.

- [Western Blot](#)
- [Blocking Peptides](#)
- [Dot Blot](#)
- [Immunohistochemistry](#)
- [Immunofluorescence](#)
- [Immunoprecipitation](#)
- [Flow Cytometry](#)

- [Cell Culture](#)

**CK5&6 - Images**

Prostate cancer



Immunohistochemical analysis of paraffin-embedded prostatic cancer tissue using AD80169 performed on the Abcarta® FAIP-30 Fully automated IHC platform. Tissue was fixed with formaldehyde at room temperature, antigen retrieval was by heat mediation with a EDTA buffer (pH9.0). Samples were incubated with primary antibody (Ready-to-use) for 15 min at room temperature. AmpSee™ Detection Systems [Abcepta:AR005] was used as the secondary antibody.