

Ferritin HC
Mouse Monoclonal antibody(Mab)
Catalog # AD80161

Specification

Ferritin HC - Product info

Application	IHC-P, IHC
Primary Accession	P02794
Reactivity	Human
Host	Mouse
Clonality	Monoclonal
Calculated MW	21226

Ferritin HC - Additional info

Gene ID	2495
Gene Name	FTH1

Other Names
Ferritin heavy chain, Ferritin H subunit, 1.16.3.1, Cell proliferation-inducing gene 15 protein, Ferritin heavy chain, N-terminally processed, FTH1, FTH, FTHL6

Dilution

IHC-P~~Ready-to-use
IHC~~Ready-to-use

Storage

Maintain refrigerated at 2-8°C

Precautions

Ferritin HC Antibody is for research use only and not for use in diagnostic or therapeutic procedures.

Ferritin HC - Protein Information

Name FTH1

Synonyms
Function

FTH, FTHL6
Stores iron in a soluble, non-toxic, readily available form. Important for iron homeostasis. Has ferroxidase activity. Iron is taken up in the ferrous form and deposited as ferric hydroxides after oxidation. Also plays a role in delivery of iron to cells. Mediates iron uptake in capsule cells of the developing kidney (By similarity).
Expressed in the liver.

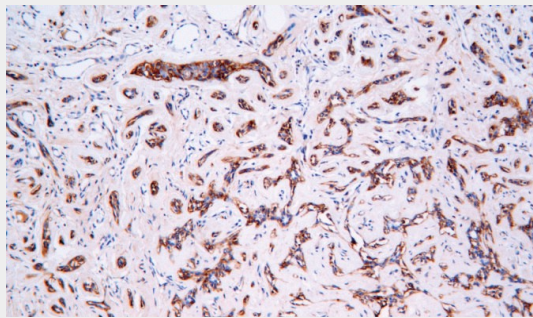
Tissue Location

Ferritin HC - Protocols

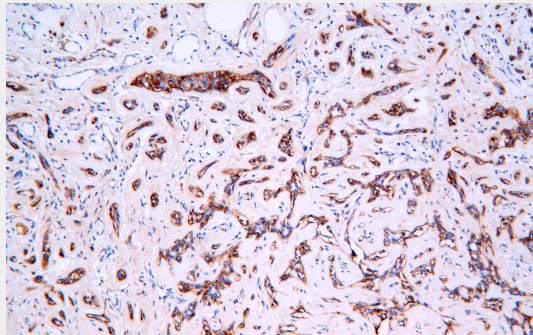
Provided below are standard protocols that you may find useful for product applications.

- [Western Blot](#)
- [Blocking Peptides](#)
- [Dot Blot](#)
- [Immunohistochemistry](#)
- [Immunofluorescence](#)
- [Immunoprecipitation](#)
- [Flow Cytometry](#)
- [Cell Culture](#)

Ferritin HC - Images



Normal breast tissues



Immunohistochemical analysis of paraffin-embedded human normal breast tissue using AD80161 performed on the Abcarta® FAIP-30 Fully automated IHC platform. Tissue was fixed with formaldehyde at room temperature, antigen retrieval was by heat mediation with a Citrate buffer (pH6.0). Samples were incubated with primary antibody (Ready-to-use) for 15 min at room temperature. AmpSee™ Detection Systems [Abcepta:AR005] was used as the secondary antibody.