

Filaggrin-1
Mouse Monoclonal antibody(Mab)
Catalog # AD80160**Specification**

Filaggrin-1 - Product info

Application	IHC-P, IHC
Primary Accession	P20930
Reactivity	Human
Host	Mouse
Clonality	Monoclonal
Calculated MW	435170

Filaggrin-1 - Additional info

Gene ID	2312
Gene Name	FLG
Other Names	
Filaggrin, FLG	

Dilution

IHC-P~~Ready-to-use
IHC~~Ready-to-use

Storage

Maintain refrigerated at 2-8°C

Precautions

Filaggrin-1 Antibody is for research use only and not for use in diagnostic or therapeutic procedures.

Filaggrin-1 - Protein Information**Name** FLG**Function**

Aggregates keratin intermediate filaments and promotes disulfide-bond formation among the intermediate filaments during terminal differentiation of mammalian epidermis.

Cellular Location

Cytoplasmic granule. Note=In the stratum granulosum of the epidermis, localized within keratohyalin granules (PubMed:1429717). In granular keratinocytes and in lower corneocytes, colocalizes with calpain-1/CAPN1 (PubMed:21531719)

Tissue Location

Expressed in skin, thymus, stomach, tonsils, testis, placenta, kidney, pancreas,

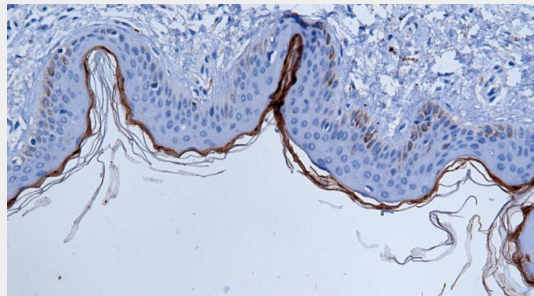
mammary gland, bladder, thyroid, salivary gland and trachea, but not detected in heart, brain, liver, lung, bone marrow, small intestine, spleen, prostate, colon, or adrenal gland (PubMed:19384417). In the skin, mainly expressed in stratum granulosum of the epidermis (PubMed:1429717) (PubMed:19384417).

Filaggrin-1 - Protocols

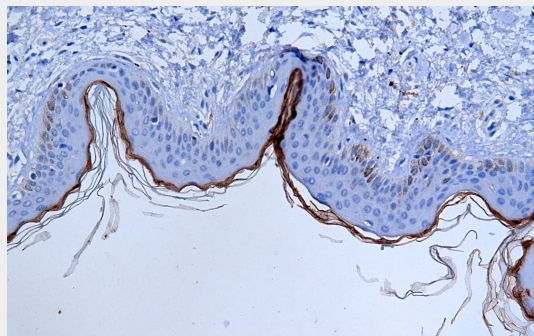
Provided below are standard protocols that you may find useful for product applications.

- [Western Blot](#)
- [Blocking Peptides](#)
- [Dot Blot](#)
- [Immunohistochemistry](#)
- [Immunofluorescence](#)
- [Immunoprecipitation](#)
- [Flow Cytometry](#)
- [Cell Culture](#)

Filaggrin-1 - Images



Skin



Immunohistochemical analysis of paraffin-embedded skin tissue using AD80160 performed on the Abcarta® FAIP-30 Fully automated IHC platform. Tissue was fixed with formaldehyde at room temperature, antigen retrieval was by heat mediation with a Citrate buffer (pH6.0). Samples were incubated with primary antibody (Ready-to-use) for 15 min at room temperature. AmpSee™ Detection Systems [Abcepta:AR005] was used as the secondary antibody.