

PU.1
Mouse Monoclonal antibody(Mab)
Catalog # AD80158

Specification

PU.1 - Product info

Application	IHC-P
Primary Accession	P17947
Reactivity	Human
Host	Mouse
Clonality	Monoclonal
Calculated MW	31083

PU.1 - Additional info

Gene ID	6688
Gene Name	SPI1
Other Names	
Transcription factor PU.1, 31 kDa-transforming protein, SPI1	

Dilution

IHC-P~~Ready-to-use

Storage

Precautions

This product is stored at 2-270 °C, please use it within the expiration date.
PU.1 Antibody is for research use only and not for use in diagnostic or therapeutic procedures.

PU.1 - Protein Information

Name SPI1

Function

Binds to the PU-box, a purine-rich DNA sequence (5'- GAGGAA-3') that can act as a lymphoid-specific enhancer. This protein is a transcriptional activator that may be specifically involved in the differentiation or activation of macrophages or B- cells. Also binds RNA and may modulate pre-mRNA splicing (By similarity). Nucleus {ECO:0000255|PROSITE-ProRule:PRU00237, ECO:0000269|PubMed:23166356}

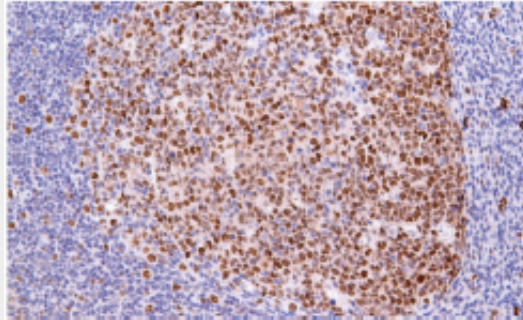
Cellular Location

PU.1 - Protocols

Provided below are standard protocols that you may find useful for product applications.

- [Western Blot](#)
- [Blocking Peptides](#)
- [Dot Blot](#)
- [Immunohistochemistry](#)
- [Immunofluorescence](#)
- [Immunoprecipitation](#)
- [Flow Cytometry](#)
- [Cell Culture](#)

PU.1 - Images



Tonsil