

GP2
Mouse Monoclonal antibody(Mab)
Catalog # AD80157

Specification

GP2 - Product info

Application	IHC-P, IHC
Primary Accession	P55259
Reactivity	Human
Host	Mouse
Clonality	Monoclonal
Calculated MW	59480

GP2 - Additional info

Gene ID	2813
Gene Name	GP2

Other Names

Pancreatic secretory granule membrane major glycoprotein GP2, Pancreatic zymogen granule membrane protein GP-2, ZAP75, GP2 ([HGNC:4441](http://www.genenames.org/cgi-bin/gene_symbol_report?hgnc_id=4441))

Dilution

IHC-P~~Ready-to-use
IHC~~Ready-to-use

Storage

Maintain refrigerated at 2-8°C

Precautions

GP2 Antibody is for research use only and not for use in diagnostic or therapeutic procedures.

GP2 - Protein Information

Name GP2 ([HGNC:4441](#))

Cellular Location

Cell membrane; Lipid-anchor, GPI-anchor. Secreted. Note=Secreted after cleavage in the pancreatic juice

Tissue Location

Pancreatic secretory (zymogen) granule.

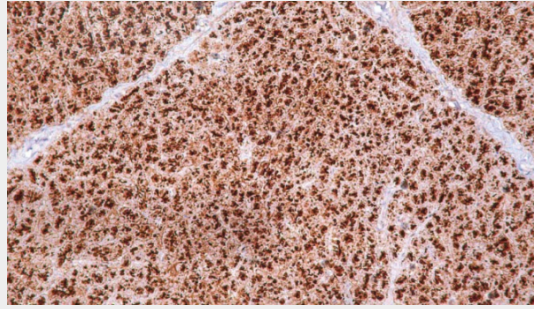
GP2 - Protocols

Provided below are standard protocols that you may find useful for product applications.

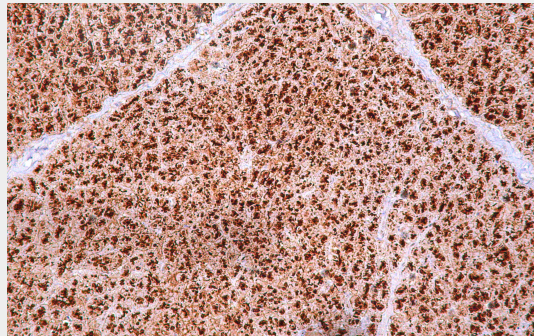
- [Western Blot](#)

- [Blocking Peptides](#)
- [Dot Blot](#)
- [Immunohistochemistry](#)
- [Immunofluorescence](#)
- [Immunoprecipitation](#)
- [Flow Cytometry](#)
- [Cell Culture](#)

GP2 - Images



Pancreas



Immunohistochemical analysis of paraffin-embedded human pancreas tissue using AD80157 performed on the Abcarta® FAIP-30 Fully automated IHC platform. Tissue was fixed with formaldehyde at room temperature, antigen retrieval was by heat mediation with a Citrate buffer (pH6.0). Samples were incubated with primary antibody (Ready-to-use) for 15 min at room temperature. AmpSee™ Detection Systems [Abcepta:AR005] was used as the secondary antibody.