

MUC6
Mouse Monoclonal antibody(Mab)
Catalog # AD80145

Specification

MUC6 - Product info

| | |
|-------------------|------------------------|
| Application | IHC-P, IHC |
| Primary Accession | O6W4X9 |
| Reactivity | Human |
| Host | Mouse |
| Clonality | Monoclonal |
| Calculated MW | 257051 |

MUC6 - Additional info

| | |
|-----------|------|
| Gene ID | 4588 |
| Gene Name | MUC6 |

Other Names
Mucin-6, MUC-6, Gastric mucin-6, MUC6

Dilution

IHC-P~~Ready-to-use
IHC~~Ready-to-use

| | |
|-------------|--|
| Storage | This product is stored at 2-8 °C, please use it within the expiration date. |
| Precautions | MUC6 Antibody is for research use only and not for use in diagnostic or therapeutic procedures. |

MUC6 - Protein Information

Name MUC6

Function May provide a mechanism for modulation of the composition of the protective mucus layer related to acid secretion or the presence of bacteria and noxious agents in the lumen. Plays an important role in the cytoprotection of epithelial surfaces and are used as tumor markers in a variety of cancers. May play a role in epithelial organogenesis.

Cellular Location
Tissue Location

Secreted.
Expressed in the regenerative zone of gastric antrum, gastric body mucosa and gastric incisura mucosa. Expressed in the deeper mucous glands of gastric antrum. Overexpressed in Helicobacter pylori

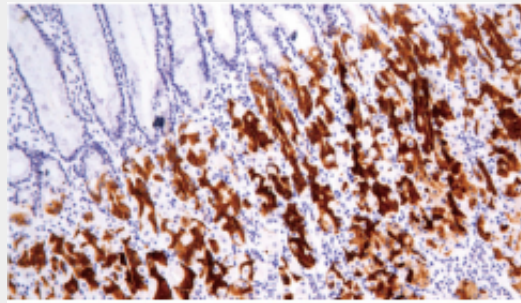
infected gastric epithelium. Highly expressed in duodenal Brunner's glands, gall bladder, seminal vesicle, pancreatic centroacinar cells and ducts, and periductal glands of the common bile duct.

MUC6 - Protocols

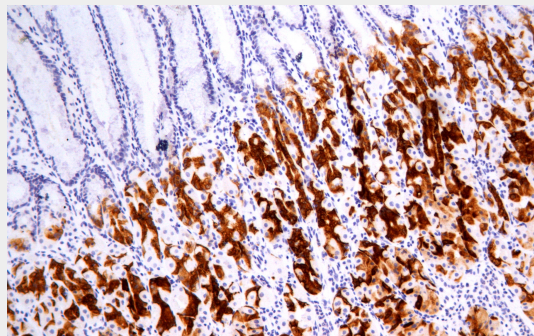
Provided below are standard protocols that you may find useful for product applications.

- [Western Blot](#)
- [Blocking Peptides](#)
- [Dot Blot](#)
- [Immunohistochemistry](#)
- [Immunofluorescence](#)
- [Immunoprecipitation](#)
- [Flow Cytometry](#)
- [Cell Culture](#)

MUC6 - Images



Gastric tissues



Immunohistochemical analysis of paraffin-embedded human stomach tissue using AD80145 performed on the Abcarta® FAIP-30 Fully automated IHC platform. Tissue was fixed with formaldehyde at room temperature, antigen retrieval was by heat mediation with a Citrate buffer (pH6.0). Samples were incubated with primary antibody (Ready-to-use) for 15 min at room temperature. AmpSee™ Detection Systems [Abcepta:AR005] was used as the secondary antibody.