

**SMA**  
**Mouse Monoclonal antibody(Mab)**  
**Catalog # AD80141**

## Specification

---

### SMA - Product info

Application	<b>IHC-P, IHC</b>
Primary Accession	<a href="#">P62736</a>
Reactivity	<b>Human</b>
Host	<b>Mouse</b>
Clonality	<b>Monoclonal</b>
Calculated MW	<b>42009</b>

### SMA - Additional info

Gene ID	<b>59</b>
Gene Name	<b>ACTA2</b>

#### Other Names

Actin, aortic smooth muscle, 3.6.4.-, Alpha-actin-2, Cell growth-inhibiting gene 46 protein, Actin, aortic smooth muscle, intermediate form, ACTA2, ACTSA, ACTVS

#### Dilution

IHC-P~~Ready-to-use  
IHC~~Ready-to-use

#### Storage

Maintain refrigerated at 2-8°C

#### Precautions

**SMA Antibody is for research use only and not for use in diagnostic or therapeutic procedures.**

### SMA - Protein Information

**Name** ACTA2

**Synonyms**  
**Function**

**ACTSA, ACTVS**

**Actins are highly conserved proteins that are involved in various types of cell motility and are ubiquitously expressed in all eukaryotic cells.**

**Cellular Location**

**Cytoplasm, cytoskeleton.**

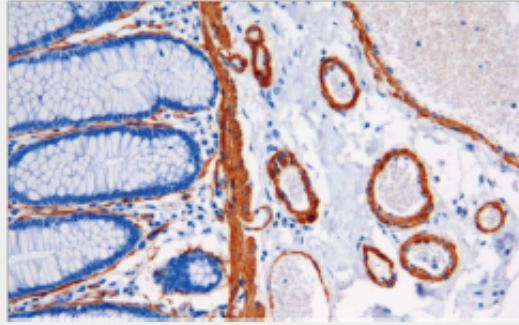
### SMA - Protocols

Provided below are standard protocols that you may find useful for product applications.

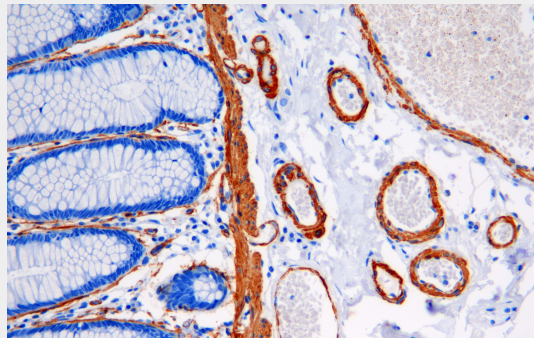
- [Western Blot](#)

- [Blocking Peptides](#)
- [Dot Blot](#)
- [Immunohistochemistry](#)
- [Immunofluorescence](#)
- [Immunoprecipitation](#)
- [Flow Cytometry](#)
- [Cell Culture](#)

### SMA - Images



Colon cancer



Immunohistochemical analysis of paraffin-embedded human tonsil tissue using AD80273 performed on the Abcarta® FAIP-30 Fully automated IHC platform. Tissue was fixed with formaldehyde at room temperature, antigen retrieval was by heat mediation with a Citrate buffer (pH 6.0). Samples were incubated with primary antibody (Ready-to-use) for 15 min at room temperature. AmpSee™ Detection Systems [Abcepta:AR005] was used as the secondary antibody.