

**S100**  
Mouse Monoclonal antibody(Mab)  
Catalog # AD80139

## Specification

---

### S100 - Product info

Application	IHC-P
Primary Accession	<a href="#">P23297</a>
Reactivity	Human
Host	Mouse
Clonality	Monoclonal
Calculated MW	10546

### S100 - Additional info

Gene ID	6271
Gene Name	S100A1

#### Other Names

Protein S100-A1, S-100 protein alpha chain, S-100 protein subunit alpha, S100 calcium-binding protein A1, S100A1, S100A

#### Dilution

IHC-P~~Ready-to-use

#### Storage

Maintain refrigerated at 2-8°C

#### Precautions

**S100 Antibody is for research use only and not for use in diagnostic or therapeutic procedures.**

### S100 - Protein Information

Name S100A1

#### Synonyms

#### Function

#### S100A

Probably acts as a Ca(2+) signal transducer (PubMed:[22399290](#)). In response to an increase in intracellular Ca(2+) levels, binds calcium which triggers a conformational change (PubMed:[23351007](#)). This conformational change allows interaction of S100A1 with specific target proteins, such as TPR-containing proteins, and the modulation of their activity (PubMed:[22399290](#)).

#### Cytoplasm.

#### Cellular Location

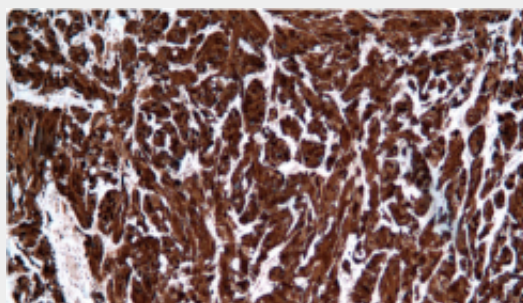
#### Tissue Location

Highly prevalent in heart. Also found in lesser quantities in skeletal muscle and

**brain****S100 - Protocols**

Provided below are standard protocols that you may find useful for product applications.

- [Western Blot](#)
- [Blocking Peptides](#)
- [Dot Blot](#)
- [Immunohistochemistry](#)
- [Immunofluorescence](#)
- [Immunoprecipitation](#)
- [Flow Cytometry](#)
- [Cell Culture](#)

**S100 - Images**

Malignant melanoma