

**CK14**  
**Mouse Monoclonal antibody(Mab)**  
**Catalog # AD80138**

## Specification

---

### CK14 - Product info

Application	IHC-P, IHC
Primary Accession	<a href="#">P02533</a>
Reactivity	Human
Host	Mouse
Clonality	Monoclonal
Calculated MW	51561

### CK14 - Additional info

Gene ID	3861
Gene Name	KRT14

**Other Names**  
Keratin, type I cytoskeletal 14, Cytokeratin-14, CK-14, Keratin-14, K14, KRT14

### Dilution

IHC-P~~Ready-to-use  
IHC~~Ready-to-use

### Storage

Maintain refrigerated at 2-8°C

### Precautions

**CK14 Antibody is for research use only and not for use in diagnostic or therapeutic procedures.**

### CK14 - Protein Information

**Name** KRT14

### Function

The nonhelical tail domain is involved in promoting KRT5-KRT14 filaments to self-organize into large bundles and enhances the mechanical properties involved in resilience of keratin intermediate filaments in vitro. Cytoplasm. Nucleus. Note=Expressed in both as a filamentous pattern Detected in the basal layer, lowered within the more apically located layers specifically in the stratum spinosum, stratum granulosum but is not detected in stratum corneum. Strongly expressed in the outer root sheath of anagen follicles

### Cellular Location

### Tissue Location

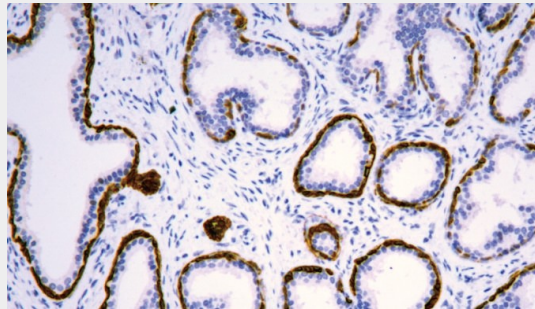
**but not in the germinative matrix, inner root sheath or hair. Found in keratinocytes surrounding the club hair during telogen.**

## **CK14 - Protocols**

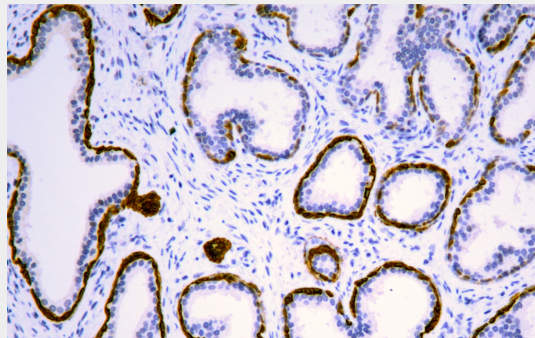
Provided below are standard protocols that you may find useful for product applications.

- [Western Blot](#)
- [Blocking Peptides](#)
- [Dot Blot](#)
- [Immunohistochemistry](#)
- [Immunofluorescence](#)
- [Immunoprecipitation](#)
- [Flow Cytometry](#)
- [Cell Culture](#)

## **CK14 - Images**



Prostate cancer



Immunohistochemical analysis of paraffin-embedded prostatic cancer tissue using AD80138 performed on the Abcarta® FAIP-30 Fully automated IHC platform. Tissue was fixed with formaldehyde at room temperature, antigen retrieval was by heat mediation with a Citrate buffer (pH6.0). Samples were incubated with primary antibody (Ready-to-use) for 15 min at room temperature. AmpSee™ Detection Systems [Abcepta:AR005] was used as the secondary antibody.