

**Tryptase**  
Mouse Monoclonal antibody(Mab)  
Catalog # AD80134

## Specification

---

### Tryptase - Product info

Application	IHC-P, IHC
Primary Accession	<a href="#">Q15661</a>
Reactivity	Human
Host	Mouse
Clonality	Monoclonal
Calculated MW	30515

### Tryptase - Additional info

Gene ID	7177
Gene Name	TPSAB1

#### Other Names

Tryptase alpha/beta-1, Tryptase-1, 3.4.21.59, Tryptase I, Tryptase alpha-1, TPSAB1, TPS1, TPS2, TPSB1

#### Dilution

IHC-P~~Ready-to-use  
IHC~~Ready-to-use

#### Storage

Maintain refrigerated at 2-8°C

#### Precautions

**Tryptase Antibody is for research use only and not for use in diagnostic or therapeutic procedures.**

### Tryptase - Protein Information

#### Name TPSAB1

Synonyms  
Function

#### TPS1, TPS2, TPSB1

Tryptase is the major neutral protease present in mast cells and is secreted upon the coupled activation-degranulation response of this cell type. May play a role in innate immunity. Isoform 2 cleaves large substrates, such as fibronectin, more efficiently than isoform 1, but seems less efficient toward small substrates (PubMed:[18854315](#)).

Cellular Location

Secreted. Note=Released from the secretory granules upon mast cell activation.

## Tissue Location

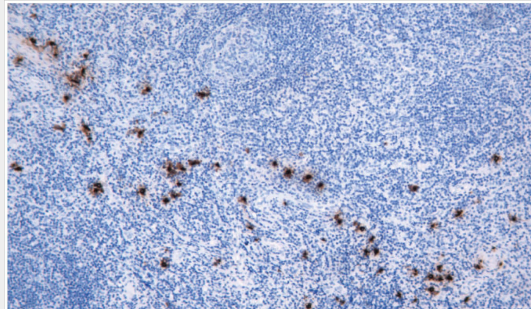
**Isoform 1 and isoform 2 are expressed in lung, stomach, spleen, heart and skin; in these tissues, isoform 1 is predominant. Isoform 2 is expressed in aorta, spleen, and breast tumor, with highest levels in the endothelial cells of some blood vessels surrounding the aorta, as well as those surrounding the tumor and low levels, if any, in mast cells (at protein level)**

## Tryptase - Protocols

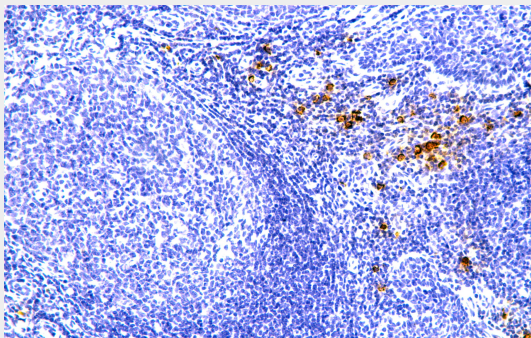
Provided below are standard protocols that you may find useful for product applications.

- [Western Blot](#)
- [Blocking Peptides](#)
- [Dot Blot](#)
- [Immunohistochemistry](#)
- [Immunofluorescence](#)
- [Immunoprecipitation](#)
- [Flow Cytometry](#)
- [Cell Culture](#)

## Tryptase - Images



Tonsil



Immunohistochemical analysis of paraffin-embedded seminoma tissue using AD80296 performed on the Abcarta® FAIP-30 Fully automated IHC platform. Tissue was fixed with formaldehyde at room temperature, antigen retrieval was by heat mediation with a EDTA buffer (pH9.0). Samples were incubated with primary antibody (Ready-to-use) for 15 min at room temperature. AmpSee™ Detection Systems [Abcepta:AR005] was used as the secondary antibody.