

PSA
Mouse Monoclonal antibody(Mab)
Catalog # AD80129

Specification

PSA - Product info

Application	IHC-P, IHC
Primary Accession	P07288
Reactivity	Human
Host	Mouse
Clonality	Monoclonal
Calculated MW	28741

PSA - Additional info

Gene ID	354
Gene Name	KLK3

Other Names

Prostate-specific antigen, PSA, 3.4.21.77, Gamma-seminoprotein, Seminolisin, Kallikrein-3, P-30 antigen, Semenogelase, KLK3, APS

Dilution

IHC-P~~Ready-to-use
IHC~~Ready-to-use

Storage

This product is stored at 2-8 °C, please use it within the expiration date.

Precautions

PSA Antibody is for research use only and not for use in diagnostic or therapeutic procedures.

PSA - Protein Information

Name KLK3

Synonyms
Function

APS
Hydrolyzes semenogelin-1 thus leading to the liquefaction of the seminal coagulum. Secreted.

Cellular Location

PSA - Protocols

Provided below are standard protocols that you may find useful for product applications.

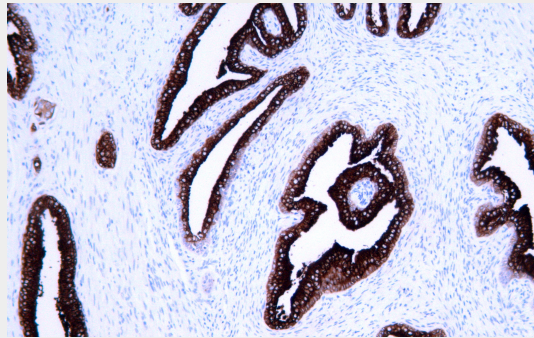
- [Western Blot](#)
- [Blocking Peptides](#)
- [Dot Blot](#)
- [Immunohistochemistry](#)

- [Immunofluorescence](#)
- [Immunoprecipitation](#)
- [Flow Cytometry](#)
- [Cell Culture](#)

PSA - Images



Prostate cancer



Immunohistochemical analysis of paraffin-embedded tissue using AD80257 performed on the Abcarta® FAIP-30 Fully automated IHC platform. Tissue was fixed with formaldehyde at room temperature, antigen retrieval was by heat mediation with a Citrate buffer (pH6.0). Samples were incubated with primary antibody (Ready-to-use) for 15 min at room temperature. AmpSee™ Detection Systems [Abcepta:AR005] was used as the secondary antibody.