

CK10
Mouse Monoclonal antibody(Mab)
Catalog # AD80126**Specification**

CK10 - Product info

Application	IHC-P, IHC
Primary Accession	P13645
Reactivity	Human
Host	Mouse
Clonality	Monoclonal
Calculated MW	58827

CK10 - Additional info

Gene ID	3858
Gene Name	KRT10
Other Names	
Keratin, type I cytoskeletal 10, Cytokeratin-10, CK-10, Keratin-10, K10, KRT10, KPP	

Dilution

IHC-P~~Ready-to-use
IHC~~Ready-to-use

Storage

Maintain refrigerated at 2-8°C

Precautions

CK10 Antibody is for research use only and not for use in diagnostic or therapeutic procedures.

CK10 - Protein Information

Name KRT10

Synonyms
Function

Cellular Location

Tissue Location

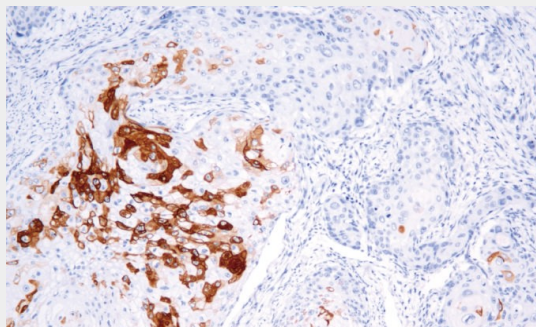
KPP
Plays a role in the establishment of the epidermal barrier on plantar skin.
Secreted, extracellular space.
Note=Localized on the surface of desquamated nasal epithelial cells.
Seen in all suprabasal cell layers including stratum corneum

CK10 - Protocols

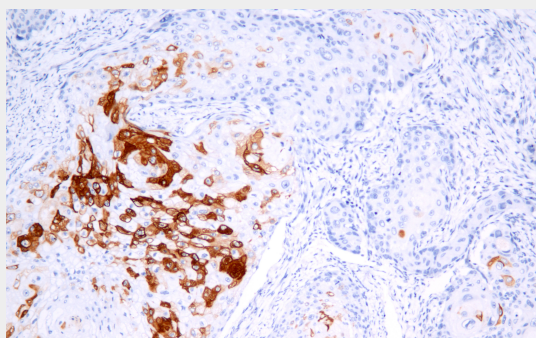
Provided below are standard protocols that you may find useful for product applications.

- [Western Blot](#)
- [Blocking Peptides](#)
- [Dot Blot](#)
- [Immunohistochemistry](#)
- [Immunofluorescence](#)
- [Immunoprecipitation](#)
- [Flow Cytometry](#)
- [Cell Culture](#)

CK10 - Images



Appendix



Immunohistochemical analysis of paraffin-embedded squamous carcinoma tissue using AD80126 performed on the Abcarta® FAIP-30 Fully automated IHC platform. Tissue was fixed with formaldehyde at room temperature, antigen retrieval was by heat mediation with a Citrate buffer (pH6.0). Samples were incubated with primary antibody (Ready-to-use) for 15 min at room temperature. AmpSee™ Detection Systems [Abcepta:AR005] was used as the secondary antibody.