

pS2
Rabbit Monoclonal antibody(Mab)
Catalog # AD80119

Specification

pS2 - Product info

Application	IHC-P, IHC
Primary Accession	P04155
Reactivity	Human
Host	Rabbit
Clonality	Monoclonal
Calculated MW	9150

pS2 - Additional info

Gene ID	7031
Gene Name	TFF1

Other Names

Trefoil factor 1, Breast cancer estrogen-inducible protein, PNR-2, Polypeptide P1.A, hP1.A, Protein pS2, TFF1, BCEI, PS2

Dilution

IHC-P~~Ready-to-use
IHC~~Ready-to-use

Storage

Precautions

This product is stored at 2-264 °C, please use it within the expiration date.
pS2 Antibody is for research use only and not for use in diagnostic or therapeutic procedures.

pS2 - Protein Information

Name TFF1

Synonyms Function

BCEI, PS2

Stabilizer of the mucous gel overlying the gastrointestinal mucosa that provides a physical barrier against various noxious agents. May inhibit the growth of calcium oxalate crystals in urine.

Cellular Location Tissue Location

Secreted

Found in stomach, with highest levels in the upper gastric mucosal cells (at protein level). Detected in goblet cells of the small and large intestine and rectum, small submucosal glands in the esophagus, mucous acini of the sublingual gland, submucosal glands of the trachea, and

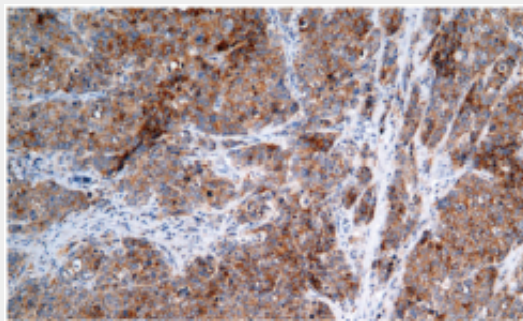
epithelial cells lining the exocrine pancreatic ducts but not in the remainder of the pancreas (at protein level). Scattered expression is detected in the epithelial cells of the gallbladder and submucosal glands of the vagina, and weak expression is observed in the bronchial goblet cells of the pseudostratified epithelia in the respiratory system (at protein level). Detected in urine (at protein level) Strongly expressed in breast cancer but at low levels in normal mammary tissue. It is regulated by estrogen in MCF-7 cells. Strong expression found in normal gastric mucosa and in the regenerative tissues surrounding ulcerous lesions of gastrointestinal tract, but lower expression found in gastric cancer (at protein level)

pS2 - Protocols

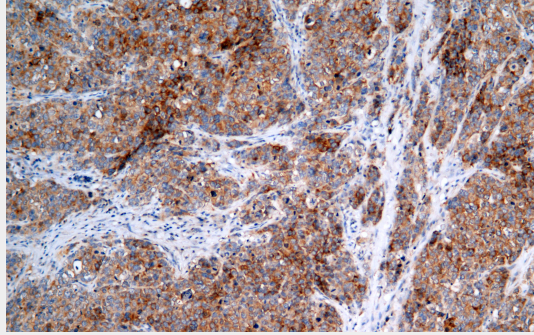
Provided below are standard protocols that you may find useful for product applications.

- [Western Blot](#)
- [Blocking Peptides](#)
- [Dot Blot](#)
- [Immunohistochemistry](#)
- [Immunofluorescence](#)
- [Immunoprecipitation](#)
- [Flow Cytometry](#)
- [Cell Culture](#)

pS2 - Images



Breast cancer



Immunohistochemical analysis of paraffin-embedded breast cancer tissue using AD80256 performed on the Abcarta® FAIP-30 Fully automated IHC platform. Tissue was fixed with formaldehyde at room temperature, antigen retrieval was by heat mediation with a Citrate buffer (pH6. 0). Samples were incubated with primary antibody(Ready-to-use) for 15 min at room temperature. AmpSee™ Detection Systems [Abcepta:AR005] was used as the secondary antibody.