

**CD138**  
**Rabbit Monoclonal antibody(Mab)**  
**Catalog # AD80117****Specification**

---

**CD138 - Product info**

Application	IHC-P, IHC
Primary Accession	<a href="#">P18827</a>
Reactivity	Human
Host	Rabbit
Clonality	Monoclonal
Calculated MW	32462

**CD138 - Additional info**

Gene ID	6382
Gene Name	SDC1

**Other Names**

Syndecan-1, SYND1, CD138, SDC1, SDC

**Dilution**

IHC-P~~Ready-to-use

IHC~~Ready-to-use

**Storage**

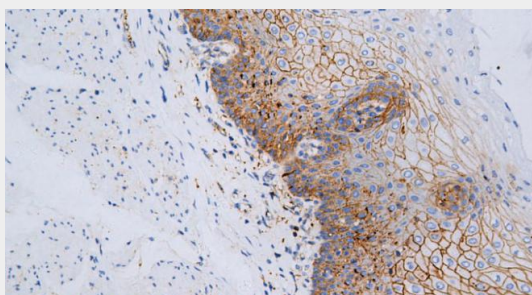
Maintain refrigerated at 2-8°C

**Precautions****CD138 Antibody is for research use only and not for use in diagnostic or therapeutic procedures.****CD138 - Protein Information****Name** SDC1 ([HGNC:10658](#))**Synonyms****Function****SDC****Cell surface proteoglycan that bears both heparan sulfate and chondroitin sulfate and that links the cytoskeleton to the interstitial matrix. Regulates exosome biogenesis in concert with SDCBP and PDCD6IP (PubMed:[22660413](#)).****Cellular Location****Membrane; Single-pass type I membrane protein. Secreted. Secreted, exosome. Note=Shedding of the ectodomain produces a soluble form.****CD138 - Protocols**

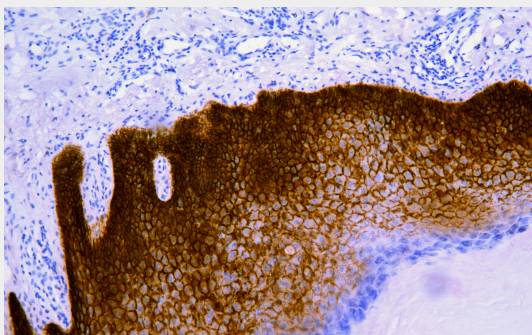
Provided below are standard protocols that you may find useful for product applications.

- [Western Blot](#)
- [Blocking Peptides](#)
- [Dot Blot](#)
- [Immunohistochemistry](#)
- [Immunofluorescence](#)
- [Immunoprecipitation](#)
- [Flow Cytometry](#)
- [Cell Culture](#)

#### **CD138 - Images**



Esophagus



Immunohistochemical analysis of paraffin-embedded skin tissue using AD80117 performed on the Abcarta® FAIP-30 Fully automated IHC platform. Tissue was fixed with formaldehyde at room temperature, antigen retrieval was by heat mediation with a Citrate buffer (pH6.0). Samples were incubated with primary antibody (Ready-to-use) for 15 min at room temperature. AmpSee™ Detection Systems □ Abcepta:AR005 □ was used as the secondary antibody.